



**Water Monitoring Result at C7 - Windsor House
Mid-Flood Tide**

Date	Time	Weather Condition	Sampling Depth		Water Temperature			pH			Salinity			DO Saturation			DO			Turbidity			Suspended Solids	
					°C			-			ppt			%			mg/L			NTU			mg/L	
					Value	Average		Value	Average		Value	Average		Value	Average		Value	Average		Value	Average		Value	Average
27/7/2016	15:11	Fine	Middle	-	27.30	27.30	27.45	8.06	8.06	8.08	31.18	31.18	31.17	80.5	79.7	78.7	5.32	5.29	5.24	4.94	4.99	4.87	13	12.50
	15:13		Middle	-	27.60	27.60		8.09	8.09		31.15	31.15		78.1	76.6		5.18	5.18		4.81	4.72		12	
29/7/2016	16:52	Fine	Middle	-	27.90	27.90	27.95	8.17	8.17	8.17	30.38	30.38	30.44	72.1	70.3	69.3	4.76	4.64	4.58	3.84	3.82	3.82	2	2.00
	16:54		Middle	-	28.00	28.00		8.16	8.16		30.49	30.49		68.2	66.6		4.50	4.40		3.81	3.81		2	
1/8/2016	-	Strong Wind Signal No. 3	Middle	-	-	-	-	-	-	-	-	-	-	-	-	-	-	-	-	-	-	-	-	
	-		Middle	-	-	-	-	-	-	-	-	-	-	-	-	-	-	-	-	-	-	-	-	
3/8/2016	17:30	Cloudy	Middle	-	26.10	26.10	26.15	7.90	7.90	7.92	30.38	30.38	30.38	75.6	76.2	75.6	5.15	5.20	5.16	6.98	6.91	6.91	6	6.00
	17:31		Middle	-	26.20	26.20		7.93	7.93		30.38	30.38		75.3	75.4		5.13	5.14		6.88	6.86		6	
5/8/2016	20:13	Fine	Middle	-	26.50	26.50	26.70	7.60	7.60	7.61	30.90	30.90	30.90	67.2	66.4	67.6	4.50	4.45	4.53	3.19	3.19	3.09	3	4.00
	20:14		Middle	-	26.90	26.90		7.61	7.61		30.90	30.89		68.2	68.7		4.57	4.60		2.98	3.01		5	
8/8/2016	10:47	Fine	Middle	-	27.70	27.70	27.80	8.04	8.04	8.04	30.53	30.53	30.53	72.8	73.1	72.5	4.82	4.84	4.82	3.90	3.94	3.93	5	5.00
	10:49		Middle	-	27.90	27.90		8.03	8.03		30.52	30.52		73.0	71.1		4.84	4.76		3.95	3.93		5	
10/8/2016	0:40	Cloudy	Middle	-	26.10	26.10	26.15	7.75	7.75	7.75	30.64	30.64	30.65	70.4	70.5	70.6	4.79	4.80	4.80	5.41	5.60	5.49	5	5.50
	0:41		Middle	-	26.20	26.20		7.74	7.74		30.65	30.65		70.6	70.7		4.80	4.81		5.51	5.43		6	
13/8/2016	1:29	Cloudy	Middle	-	26.90	26.90	26.93	7.67	7.67	7.67	30.46	30.46	30.46	73.1	75.6	74.0	4.91	5.09	4.97	9.84	9.71	9.72	7	6.50
	1:30		Middle	-	27.00	26.90		7.67	7.67		30.46	30.46		74.3	72.8		4.99	4.89		9.68	9.66		6	
15/8/2016	14:40	Cloudy	Middle	-	26.60	26.60	26.65	8.15	8.15	8.15	31.28	31.28	31.26	74.1	74.2	74.0	4.98	4.90	4.96	2.36	2.33	2.33	5	4.00
	14:42		Middle	-	26.70	26.70		8.15	8.15		31.19	31.29		74.2	73.6		4.99	4.95		2.32	2.31		3	
17/8/2016	16:40	Cloudy	Middle	-	26.40	26.40	26.45	7.92	7.92	7.92	30.81	30.81	30.82	76.3	76.5	76.9	5.16	5.17	5.20	7.90	7.67	7.67	8	7.50
	16:41		Middle	-	26.50	26.50		7.91	7.91		30.82	30.82		77.4	77.2		5.23	5.22		7.64	7.47		7	
19/8/2016	17:50	Cloudy	Middle	-	27.60	27.60	27.65	7.78	7.78	7.78	30.28	30.28	30.28	70.5	71.0	70.6	4.69	4.72	4.69	6.34	6.32	6.22	4	4.00
	17:55		Middle	-	27.70	27.70		7.78	7.78		30.28	30.28		70.0	70.8		4.65	4.71		6.05	6.15		4	
22/8/2016	11:48	Fine	Middle	-	27.80	27.80	27.60	8.11	8.11	8.11	29.50	29.50	29.50	63.3	60.6	61.1	4.22	4.04	4.07	5.76	5.80	5.82	6	5.00
	11:50		Middle	-	27.80	27.00		8.11	8.11		29.50	29.50		60.5	60.0		4.03	4.00		5.81	5.91		4	
24/8/2016	12:00	Fine	Middle	-	28.70	28.70	28.70	7.69	7.69	7.70	29.56	29.56	29.57	68.3	66.0	65.8	4.49	4.43	4.34	3.52	3.58	3.66	3	3.50
	12:02		Middle	-	28.70	28.70		7.70	7.70		29.57	29.57		64.9	63.8		4.26	4.19		3.81	3.73		4	
26/8/2016	15:30	Sunny	Middle	-	30.00	30.00	30.15	7.70	7.70	7.73	29.14	29.14	29.13	96.9	97.3	96.4	6.23	6.25	6.19	4.65	4.64	4.63	4	4.50
	15:32		Middle	-	30.30	30.30		7.75	7.75		29.11	29.11		96.7	94.5		6.21	6.06		4.59	4.62		5	

Remarks:
Single underline denotes exceedance over Action Level.
Double underline denotes exceedance over Limit Level.



**Water Monitoring Result at C1 - HKCEC Extension
Mid-Flood Tide**

Date	Time	Weather Condition	Sampling Depth		Water Temperature			pH			Salinity			DO Saturation			DO			Turbidity			Suspended Solids	
					°C			-			ppt			%			mg/L			NTU			mg/L	
					Value	Average		Value	Average		Value	Average		Value	Average		Value	Average		Value	Average		Value	Average
27/7/2016	11:50	Fine	Middle	3.0	26.10	26.10	26.15	8.20	8.20	8.20	31.62	31.62	31.62	83.4	83.7	83.1	5.64	5.66	5.62	6.25	6.08	6.11	8	8.00
	11:52		Middle	3.0	26.20	26.20		8.20	8.20		31.61	31.61		31.62	82.3		82.8	5.57		5.60	5.62		6.04	
29/7/2016	15:34	Fine	Middle	2.5	27.10	27.10	27.20	8.36	8.36	8.36	31.09	31.09	31.05	75.3	75.6	75.0	5.03	5.05	5.01	6.00	5.99	5.88	8	8.00
	15:36		Middle	2.5	27.30	27.30		8.36	8.36		31.01	31.01		31.05	75.2		74.0	5.01		4.94	5.01		5.82	
1/8/2016	-	Strong Wind Signal No. 3	Middle	-	-	-		-	-		-	-		-	-		-	-		-	-		-	
	-		Middle	-	-	-		-	-		-	-		-	-		-	-		-	-		-	
3/8/2016	20:35	Cloudy	Middle	3.5	25.10	25.10	25.25	7.74	7.74	7.76	31.13	31.13	31.13	69.9	70.0	69.6	4.81	4.81	4.78	6.04	6.01	6.00	8	8.00
	20:36		Middle	3.5	25.40	25.40		7.77	7.77		31.12	31.12		31.13	69.2		69.2	4.75		4.76	4.78		5.98	
5/8/2016	21:55	Fine	Middle	3.0	25.70	25.70	25.75	7.69	7.69	7.70	31.59	31.59	31.59	62.4	62.8	63.4	4.25	4.27	4.32	4.77	4.76	4.80	4	4.50
	21:56		Middle	3.0	25.80	25.80		7.71	7.71		31.59	31.59		31.59	64.1		64.4	4.38		4.38	4.32		4.82	
8/8/2016	10:13	Fine	Middle	2.5	26.70	26.70	26.65	8.13	8.13	8.13	31.12	31.12	31.18	62.9	60.7	60.1	4.24	4.09	4.05	4.59	4.52	4.57	3	3.00
	10:15		Middle	2.5	26.60	26.60		8.13	8.13		31.23	31.23		31.18	59.0		57.7	3.98		3.89	4.05		4.57	
10/8/2016	0:18	Cloudy	Middle	2.5	25.80	25.80	25.80	7.75	7.75	7.76	31.15	31.15	31.15	68.3	68.5	68.2	4.66	4.68	4.66	2.12	2.10	2.16	6	6.00
	0:19		Middle	2.5	25.80	25.80		7.76	7.76		31.15	31.15		31.15	68.1		67.9	4.67		4.61	4.66		2.22	
13/8/2016	4:04	Cloudy	Middle	3.0	26.30	26.30	26.35	7.51	7.52	7.55	30.56	30.56	30.56	70.3	70.2	70.6	4.77	4.77	4.79	1.80	1.82	1.79	2	2.50
	4:05		Middle	3.0	26.40	26.40		7.58	7.58		30.56	30.56		30.56	70.5		71.2	4.79		4.82	4.79		1.78	
15/8/2016	17:49	Cloudy	Middle	3.5	25.00	25.80	25.60	8.25	8.25	8.25	30.88	30.88	30.89	75.8	75.9	75.3	5.18	5.19	5.15	4.05	4.04	4.04	5	5.00
	17:51		Middle	3.5	25.80	25.80		8.25	8.25		30.89	30.89		30.89	74.8		74.7	5.11		5.11	5.15		4.06	
17/8/2016	18:43	Cloudy	Middle	2.5	26.40	26.40	19.83	7.70	7.70	7.73	30.92	30.92	30.92	70.1	69.7	69.9	4.74	4.71	4.73	8.82	8.80	8.75	11	11.00
	18:44		Middle	2.5	0.00	26.50		7.76	7.76		30.92	30.92		30.92	69.9		70.0	4.72		4.73	4.73		8.78	
19/8/2016	21:00	Cloudy	Middle	2.5	26.90	26.90	26.90	7.75	7.75	7.77	30.65	30.65	30.65	71.5	71.6	71.2	4.80	4.81	4.78	9.37	9.44	9.42	10	9.50
	21:01		Middle	2.5	26.90	26.90		7.78	7.78		30.65	30.65		30.65	71.0		70.6	4.77		4.75	4.78		9.42	
22/8/2016	10:49	Fine	Middle	2.5	27.00	27.00	27.00	8.20	8.20	8.20	30.05	30.05	30.08	58.3	56.8	56.8	3.93	3.83	3.82	6.96	7.14	6.96	6	5.00
	10:51		Middle	2.5	27.00	27.00		8.20	8.20		30.10	30.10		30.08	56.0		55.9	3.77		3.76	3.82		6.99	
24/8/2016	11:16	Fine	Middle	2.5	27.70	27.70	27.70	7.82	7.82	7.82	29.82	29.82	29.83	71.9	71.3	70.9	4.80	4.75	4.72	4.93	4.82	4.74	4	4.00
	11:18		Middle	2.5	27.70	27.70		7.82	7.82		29.83	29.83		29.83	70.5		69.7	4.70		4.64	4.72		4.69	
26/8/2016	14:30	Sunny	Middle	3.0	28.70	28.70	28.75	7.91	7.91	7.92	29.60	29.60	29.60	94.2	94.8	95.1	6.18	6.22	6.23	3.21	3.22	3.23	4	3.50
	14:32		Middle	3.0	28.80	28.80		7.92	7.92		29.60	29.60		29.60	96.1		95.1	6.30		6.23	6.23		3.23	

Remarks:
Single underline denotes exceedance over Action Level.
Double underline denotes exceedance over Limit Level.



**Water Monitoring Result at P1 - HKCEC Phase I
Mid-Flood Tide**

Date	Time	Weather Condition	Sampling Depth		Water Temperature			pH			Salinity			DO Saturation			DO		Turbidity		Suspended Solids			
					°C			-			ppt			%			mg/L		NTU		mg/L			
					Value	Average		Value	Average		Value	Average		Value	Average		Value	Average		Value	Average	Value	Average	
27/7/2016	11:30	Fine	Middle	3.0	27.40	27.40	27.60	8.25	8.25	8.25	31.23	31.23	31.23	88.3	86.6	87.4	5.83	5.85	5.80	4.01	4.02	4.02	7	6.50
	11:32		Middle	3.0	27.80	27.80		8.25	8.25		31.22	31.22		87.2	87.4		5.77	5.74		4.01	4.02		6	
29/7/2016	15:50	Fine	Middle	2.5	29.10	29.10	29.20	8.30	8.30	8.30	31.30	31.30	31.27	72.4	72.3	72.2	4.67	4.66	4.65	4.63	4.67	4.62	5	5.50
	15:52		Middle	2.5	29.30	29.30		8.30	8.30		31.23	31.23		72.0	71.9		4.64	4.63		4.60	4.59		6	
1/8/2016	-	Strong Wind Signal No. 3	Middle	-	-	-	-	-	-	-	-	-	-	-	-	-	-	-	-	-	-	-	-	
	-		Middle	-	-	-	-	-	-	-	-	-	-	-	-	-	-	-	-	-	-	-	-	
3/8/2016	20:05	Cloudy	Middle	3.5	25.80	25.80	25.85	7.85	7.85	7.86	31.12	31.12	31.12	81.9	83.1	82.5	5.59	5.67	5.63	5.14	5.20	5.14	6	5.50
	20:06		Middle	3.5	25.90	25.90		7.86	7.86		31.12	31.12		82.2	82.8		5.61	5.65		5.10	5.10		5	
5/8/2016	21:27	Fine	Middle	3.0	26.30	26.30	26.35	7.76	7.76	7.77	31.45	31.45	31.45	79.8	79.4	78.6	5.38	5.35	5.30	4.86	4.77	4.86	3	3.50
	21:28		Middle	3.0	26.40	26.40		7.77	7.77		31.45	31.45		77.9	77.4		5.24	5.22		4.84	4.95		4	
8/8/2016	9:57	Fine	Middle	2.5	27.60	27.60	27.70	8.23	8.23	8.23	31.16	31.16	31.25	64.7	66.0	65.2	4.25	4.34	4.29	3.62	3.60	3.60	3	3.50
	9:59		Middle	2.5	27.80	27.80		8.22	8.22		31.33	31.33		65.5	64.4		4.32	4.25		3.58	3.58		4	
10/8/2016	23:48	Cloudy	Middle	2.5	26.00	26.00	26.00	7.81	7.81	7.82	31.27	31.27	31.28	79.9	79.5	79.3	5.44	5.40	5.39	2.82	2.90	2.91	3	3.00
	23:49		Middle	2.5	26.00	26.00		7.82	7.82		31.28	31.28		79.1	78.6		5.37	5.33		2.94	2.99		3	
13/8/2016	3:30	Cloudy	Middle	3.0	26.70	26.70	26.75	7.68	7.68	7.70	30.94	30.94	30.95	80.7	81.2	81.6	5.42	5.50	5.48	2.66	2.68	2.67	3	3.00
	3:31		Middle	3.0	26.80	26.80		7.72	7.72		30.95	30.95		81.4	83.0		5.47	5.53		2.70	2.62		3	
15/8/2016	17:30	Cloudy	Middle	3.5	26.50	26.50	26.50	7.74	7.74	7.90	30.04	30.04	30.17	76.6	75.6	75.8	5.20	5.13	5.14	2.78	2.81	2.83	3	3.50
	17:32		Middle	3.5	26.50	26.50		8.05	8.05		30.04	30.54		75.4	75.4		5.12	5.12		2.89	2.84		4	
17/8/2016	17:45	Cloudy	Middle	2.5	26.30	26.30	26.30	7.69	7.69	7.75	30.53	30.53	30.54	80.8	81.3	81.4	5.49	5.52	5.52	6.03	5.92	5.80	3	3.00
	17:46		Middle	2.5	26.30	26.30		7.80	7.80		30.54	30.54		81.4	82.0		5.52	5.55		5.75	5.51		3	
19/8/2016	20:35	Cloudy	Middle	2.5	27.40	27.40	27.45	7.85	7.85	7.85	30.22	30.22	30.22	80.6	83.0	82.2	5.38	5.55	5.49	8.04	8.16	8.10	9	8.50
	20:36		Middle	2.5	27.50	27.50		7.85	7.85		30.22	30.22		82.9	82.2		5.53	5.49		8.08	8.11		8	
22/8/2016	10:33	Fine	Middle	2.5	27.50	27.50	27.55	8.16	8.16	8.17	29.80	29.80	29.81	69.1	69.4	68.2	4.65	4.63	4.56	4.65	4.65	4.65	6	5.50
	10:35		Middle	2.5	27.60	27.60		8.18	8.18		29.81	29.81		67.9	66.5		4.53	4.44		4.65	4.63		5	
24/8/2016	11:00	Fine	Middle	2.5	28.30	28.30	28.30	7.76	7.76	7.77	29.90	29.90	29.90	65.1	65.2	65.1	4.30	4.30	4.30	4.13	4.17	4.16	4	4.00
	11:02		Middle	2.5	28.30	28.30		7.77	7.77		29.90	29.90		65.6	64.6		4.33	4.26		4.17	4.16		4	
26/8/2016	14:10	Sunny	Middle	3.0	30.40	30.40	30.65	7.90	7.90	7.90	29.68	29.68	29.67	102.9	101.3	101.9	6.53	6.42	6.46	3.41	3.49	3.48	3	2.50
	14:12		Middle	3.0	30.90	30.90		7.89	7.89		29.65	29.65		102.3	100.9		6.48	6.39		3.51	3.50		2	

Remarks:
Single underline denotes exceedance over Action Level.
Double underline denotes exceedance over Limit Level.



**Water Monitoring Result at P3 - APA
Mid-Flood Tide**

Date	Time	Weather Condition	Sampling Depth		Water Temperature			pH			Salinity			DO Saturation			DO			Turbidity			Suspended Solids	
					°C			-			ppt			%			mg/L			NTU			mg/L	
					Value	Average		Value	Average		Value	Average		Value	Average		Value	Average		Value	Average		Value	Average
27/7/2016	11:35	Fine	Middle	3.0	26.50	26.50	26.60	8.23	8.23	8.23	31.65	31.65	31.65	80.1	81.6	81.5	5.39	5.46	5.47	5.13	5.00	5.02	6	7.00
	11:37		Middle	3.0	26.70	26.70		8.22	8.22		31.64	31.64		82.7	81.4		5.55	5.46		4.92	5.03		8	
29/7/2016	15:38	Fine	Middle	2.5	28.10	28.00	28.13	8.33	8.33	8.33	31.08	31.08	31.05	78.2	77.9	77.1	5.14	5.11	5.07	4.50	4.63	4.61	7	6.50
	15:40		Middle	2.5	28.20	28.20		8.33	8.33		31.01	31.01		76.8	75.6		5.05	4.97		4.69	4.63		6	
1/8/2016	-	Strong Wind Signal No. 3	Middle	-	-	-	-	-	-	-	-	-	-	-	-	-	-	-	-	-	-	-	-	
	-		Middle	-	-	-	-	-	-	-	-	-	-	-	-	-	-	-	-	-	-	-	-	
3/8/2016	20:11	Cloudy	Middle	3.5	25.30	25.30	25.35	7.82	7.82	7.82	31.12	31.12	31.13	73.3	73.7	73.2	5.04	5.06	5.03	5.19	5.17	5.14	5	5.00
	20:12		Middle	3.5	25.40	25.40		7.82	7.82		31.13	31.13		73.2	72.5		5.03	4.98		5.15	5.04		5	
5/8/2016	21:33	Fine	Middle	3.0	26.10	26.10	26.15	7.80	7.80	7.80	31.45	31.45	31.45	73.2	72.9	73.6	4.96	4.94	4.99	3.97	3.99	4.03	3	2.50
	21:34		Middle	3.0	26.20	26.20		7.80	7.80		31.45	31.45		74.0	74.4		5.01	5.03		4.04	4.11		2	
8/8/2016	10:01	Fine	Middle	2.5	26.80	26.80	26.85	8.19	8.19	8.18	31.40	31.40	31.42	51.6	50.5	50.1	3.46	3.38	3.36	5.35	5.36	5.29	5	4.50
	10:03		Middle	2.5	26.90	26.90		8.17	8.17		31.43	31.43		49.5	48.7		3.32	3.26		5.25	5.21		4	
10/8/2016	23:55	Cloudy	Middle	2.5	25.90	25.90	25.90	7.59	7.59	7.62	31.38	31.38	31.39	67.8	68.3	68.3	4.61	4.64	4.64	2.67	2.69	2.65	4	4.50
	23:56		Middle	2.5	25.90	25.90		7.65	7.65		31.39	31.39		68.1	69.0		4.60	4.70		2.61	2.63		5	
13/8/2016	3:36	Cloudy	Middle	3.0	26.60	26.60	26.65	7.78	7.78	7.78	30.96	30.96	30.96	73.9	73.7	73.5	4.98	4.96	4.95	1.99	2.11	2.10	2	2.00
	3:37		Middle	3.0	26.70	26.70		7.78	7.78		30.96	30.96		73.5	72.7		4.95	4.90		2.13	2.17		2	
15/8/2016	17:34	Cloudy	Middle	3.5	26.10	26.10	26.05	8.11	8.11	8.15	31.03	31.03	31.05	76.6	75.0	77.9	5.71	5.60	5.55	3.76	3.59	3.60	5	5.00
	17:36		Middle	3.5	26.00	26.00		8.19	8.19		31.07	31.07		79.2	80.6		5.39	5.49		3.53	3.51		5	
17/8/2016	18:00	Cloudy	Middle	2.5	26.30	26.30	26.35	7.88	7.88	7.89	31.16	31.16	31.16	71.0	71.1	70.9	4.80	4.80	4.79	3.71	3.79	3.84	4	4.00
	18:01		Middle	2.5	26.40	26.40		7.89	7.89		31.15	31.15		70.8	70.5		4.79	4.77		3.92	3.94		4	
19/8/2016	20:41	Cloudy	Middle	2.5	27.10	27.10	27.15	7.85	7.85	7.85	30.22	30.22	30.22	70.3	70.8	70.4	4.70	4.75	4.72	5.53	5.51	5.47	4	4.50
	20:42		Middle	2.5	27.20	27.20		7.84	7.84		30.23	30.22		70.5	70.1		4.73	4.71		5.45	5.40		5	
22/8/2016	10:37	Fine	Middle	2.5	27.50	27.50	27.40	8.18	8.18	8.19	29.49	29.49	29.71	69.2	68.1	66.4	4.64	4.56	4.45	6.73	6.57	6.62	4	5.00
	10:39		Middle	2.5	27.30	27.30		8.19	8.19		29.93	29.93		65.0	63.3		4.36	4.23		6.61	6.57		6	
24/8/2016	11:04	Fine	Middle	2.5	27.80	27.80	27.85	7.78	7.78	7.79	29.96	29.96	29.95	78.9	78.3	78.7	5.24	5.20	5.23	5.40	5.77	5.64	5	5.00
	11:06		Middle	2.5	27.90	27.90		7.79	7.79		29.93	29.93		78.8	78.8		5.23	5.24		5.81	5.58		5	
26/8/2016	14:15	Sunny	Middle	3.0	29.50	29.50	29.55	7.89	7.89	7.89	29.65	29.65	29.65	94.4	94.1	95.2	6.11	6.09	6.16	3.24	3.24	3.23	3	3.50
	14:17		Middle	3.0	29.60	29.60		7.89	7.89		29.64	29.64		96.0	96.3		6.20	6.22		3.22	3.20		4	

Remarks:
Single underline denotes exceedance over Action Level.
Double underline denotes exceedance over Limit Level.



**Water Monitoring Result at P4 - SOC
Mid-Flood Tide**

Date	Time	Weather Condition	Sampling Depth		Water Temperature			pH			Salinity			DO Saturation			DO			Turbidity			Suspended Solids	
					°C			-			ppt			%			mg/L			NTU			mg/L	
			m		Value	Average	Value	Average	Value	Average	Value	Average	Value	Average	Value	Average	Value	Average	Value	Average	Value	Average	Value	Average
27/7/2016	11:40	Fine	Middle	3.0	26.40	26.40	26.40	8.21	8.21	8.21	31.65	31.65	31.64	77.0	78.4	78.0	5.18	5.28	5.25	6.52	6.54	6.68	8	8.50
	11:42		Middle	3.0	26.40	26.40		8.20	8.20		31.63	31.63		78.9	77.8		5.31	5.24		6.81	6.85		9	
29/7/2016	15:42	Fine	Middle	2.5	27.40	27.40	27.50	8.34	8.34	8.34	31.27	31.17	31.25	73.6	73.5	73.4	4.88	4.88	4.87	4.80	4.79	4.89	6	6.00
	15:44		Middle	2.5	27.60	27.60		8.34	8.34		31.27	31.27		73.3	73.2		4.86	4.86		4.88	5.08		6	
1/8/2016	-	Strong Wind Signal No. 3	Middle	-	-	-	-	-	-	-	-	-	-	-	-	-	-	-	-	-	-	-	-	-
	-		Middle	-	-	-	-	-	-	-	-	-	-	-	-	-	-	-	-	-	-	-	-	-
3/8/2016	20:17	Cloudy	Middle	3.5	25.30	25.30	25.40	7.87	7.87	7.87	31.23	31.23	31.23	69.1	69.4	69.2	4.74	4.76	4.75	5.16	5.14	5.17	5	5.00
	20:18		Middle	3.5	25.50	25.50		7.86	7.86		31.24	31.23		69.2	68.9		4.75	4.73		5.20	5.17		5	
5/8/2016	21:39	Fine	Middle	3.0	26.00	25.90	25.93	7.80	7.80	7.80	31.60	31.60	31.60	69.6	69.3	68.5	4.72	4.70	4.65	4.26	4.36	4.32	3	3.50
	21:40		Middle	3.0	25.90	25.90		7.80	7.80		31.60	31.60		67.9	67.1		4.61	4.55		4.37	4.30		4	
8/8/2016	10:05	Fine	Middle	2.5	26.60	26.80	26.70	8.16	8.16	8.16	31.23	32.23	31.48	53.0	51.6	50.6	3.57	3.43	3.39	5.07	5.13	5.11	5	5.00
	10:07		Middle	2.5	26.70	26.70		8.15	8.15		31.23	31.23		49.6	48.3		3.33	3.21		5.13	5.12		5	
10/8/2016	0:03	Cloudy	Middle	2.5	25.90	25.90	25.90	7.78	7.78	7.78	31.21	31.21	31.21	68.8	69.2	68.8	4.69	4.72	4.69	2.68	2.47	2.70	6	5.50
	0:04		Middle	2.5	25.90	25.90		7.78	7.78		31.21	31.21		68.6	68.7		4.67	4.68		2.94	2.71		5	
13/8/2016	3:45	Cloudy	Middle	3.0	26.50	26.50	26.55	7.78	7.78	7.79	30.97	30.97	30.98	74.4	74.9	74.2	5.02	5.05	5.01	2.05	2.01	2.00	2	2.50
	3:46		Middle	3.0	26.60	26.60		7.79	7.79		30.98	30.98		73.2	74.2		4.94	5.01		1.99	1.95		3	
15/8/2016	17:38	Cloudy	Middle	3.5	26.10	26.10	26.05	8.20	8.20	8.22	30.90	30.90	30.90	79.7	79.5	79.2	5.44	5.52	5.43	3.34	3.33	3.36	5	5.00
	17:40		Middle	38.5	26.00	26.00		8.23	8.23		30.90	30.90		78.4	79.2		5.35	5.40		3.37	3.40		5	
17/8/2016	18:30	Cloudy	Middle	2.5	26.50	26.50	26.50	7.87	7.87	7.87	31.31	31.31	31.31	72.0	72.5	71.7	4.86	4.89	4.83	8.64	8.59	8.65	12	12.50
	18:31		Middle	2.5	26.50	26.50		7.87	7.87		31.31	31.31		70.9	71.5		4.78	4.80		8.62	8.74		13	
19/8/2016	20:48	Cloudy	Middle	2.5	26.90	26.90	26.95	7.86	7.86	7.86	30.66	30.66	30.66	73.6	73.9	73.5	4.94	4.95	4.92	10.94	10.94	10.90	12	12.50
	20:49		Middle	2.5	27.00	27.00		7.86	7.86		30.66	30.66		72.3	74.0		4.84	4.95		10.87	10.84		13	
22/8/2016	10:41	Fine	Middle	2.5	27.20	27.20	27.20	8.19	8.19	8.19	29.85	29.85	29.95	60.7	58.8	58.2	4.08	3.95	3.91	6.85	6.85	6.87	5	5.00
	10:43		Middle	2.5	27.20	27.20		8.19	8.19		30.05	30.05		57.1	56.2		3.83	3.77		6.83	6.93		5	
24/8/2016	11:08	Fine	Middle	2.5	27.90	27.90	27.85	7.80	7.80	7.81	28.09	28.09	28.10	78.1	76.3	75.4	5.20	5.08	5.02	5.42	5.24	5.23	4	4.50
	11:10		Middle	2.5	27.80	27.80		7.81	7.81		28.10	28.10		74.1	72.9		4.94	4.85		5.14	5.12		5	
26/8/2016	14:20	Sunny	Middle	3.0	29.10	29.10	29.15	7.89	7.89	7.90	29.56	29.64	29.58	96.9	95.9	95.9	6.31	6.24	6.24	3.37	3.38	3.33	4	3.50
	14:22		Middle	3.0	29.20	29.20		7.91	7.91		29.56	29.56		95.4	95.4		6.21	6.21		3.28	3.29		3	

Remarks:
Single underline denotes exceedance over Action Level.
Double underline denotes exceedance over Limit Level.



**Water Monitoring Result at P5 - WCT / RT / IT
Mid-Flood Tide**

Date	Time	Weather Condition	Sampling Depth		Water Temperature			pH			Salinity			DO Saturation		DO		Turbidity		Suspended Solids				
					°C			-			ppt			%		mg/L		NTU		mg/L				
			m	Value	Average	Value	Average	Value	Average	Value	Average	Value	Average	Value	Average	Value	Average	Value	Average	Value	Average	Value	Average	
27/7/2016	11:45	Fine	Middle	3.0	26.20	26.20	26.25	8.20	8.20	8.20	31.57	31.57	31.57	79.2	79.6	79.8	5.36	5.38	5.39	6.21	6.13	6.27	10	9.00
	11:47		Middle	3.0	26.30	26.30		8.20	8.20		31.57	31.57		80.1	80.2		5.40	5.41		6.37	6.37		8	
29/7/2016	15:46	Fine	Middle	2.5	27.50	27.50	27.50	8.34	8.34	8.35	31.05	31.05	31.05	74.4	72.4	72.1	4.94	4.81	4.79	5.08	5.09	5.06	7	7.00
	15:48		Middle	2.5	27.50	27.50		8.35	8.35		31.05	31.05		71.2	70.3		4.73	4.67		5.07	5.01		7	
1/8/2016	-	Strong Wind Signal No. 3	Middle	-	-	-	-	-	-	-	-	-	-	-	-	-	-	-	-	-	-	-	-	
	-		Middle	-	-	-	-	-	-	-	-	-	-	-	-	-	-	-	-	-	-	-	-	
3/8/2016	20:25	Cloudy	Middle	3.5	25.20	25.20	25.25	7.84	7.84	7.84	31.10	31.10	31.10	68.3	68.9	68.7	4.70	4.74	4.72	6.56	6.54	6.48	6	6.00
	20:26		Middle	3.5	25.30	25.30		7.84	7.84		31.10	31.10		68.9	68.5		4.74	4.71		6.44	6.36		6	
5/8/2016	21:50	Fine	Middle	3.0	25.70	25.70	25.75	7.81	7.81	7.81	31.61	31.61	31.61	68.5	69.3	69.6	4.66	4.72	4.74	4.69	4.63	4.64	6	5.50
	21:51		Middle	3.0	25.80	25.80		7.81	7.81		31.61	31.61		70.5	70.1		4.80	4.77		4.61	4.64		5	
8/8/2016	10:09	Fine	Middle	2.5	26.80	26.80	26.70	8.14	8.14	8.14	30.99	30.99	31.10	58.1	56.7	55.9	3.92	3.83	3.68	5.57	5.19	5.38	6	6.00
	10:11		Middle	2.5	26.60	26.60		8.13	8.13		31.21	31.21		56.9	51.7		3.50	3.48		5.27	5.47		6	
10/8/2016	0:09	Cloudy	Middle	2.5	25.80	25.80	25.80	7.79	7.79	7.79	31.21	31.21	31.21	68.3	68.5	68.5	4.67	4.67	4.68	2.04	2.00	2.00	3	3.00
	0:10		Middle	2.5	25.80	25.80		7.79	7.79		31.21	31.21		68.2	69.1		4.67	4.71		1.98	1.96		3	
13/8/2016	3:52	Cloudy	Middle	3.0	26.30	26.30	26.35	7.80	7.80	7.80	31.00	31.00	31.01	71.9	72.7	71.6	4.87	4.92	4.82	2.07	2.01	2.03	3	2.50
	3:53		Middle	3.0	26.40	26.40		7.80	7.80		31.01	31.01		71.1	70.5		4.77	4.72		2.04	1.99		2	
15/8/2016	17:42	Cloudy	Middle	3.5	26.00	26.00	25.90	8.23	8.23	8.24	31.29	31.29	31.29	72.3	72.8	72.5	4.94	4.97	4.95	4.16	4.36	4.39	6	6.50
	17:44		Middle	3.5	25.80	25.80		8.25	8.25		31.29	31.29		72.3	72.5		4.94	4.94		4.51	4.51		7	
17/8/2016	18:36	Cloudy	Middle	2.5	26.40	26.40	26.40	7.90	7.90	7.91	31.29	31.29	31.29	72.5	73.0	72.3	4.90	4.92	4.88	8.04	8.08	8.10	11	10.50
	16:37		Middle	2.5	26.40	26.40		7.91	7.91		31.29	31.29		72.0	71.5		4.86	4.82		8.12	8.15		10	
19/8/2016	20:54	Cloudy	Middle	2.5	27.00	27.00	27.05	7.91	7.91	7.91	30.59	30.59	30.59	72.4	73.4	73.2	4.86	4.92	4.91	11.44	11.42	11.46	12	11.00
	20:55		Middle	2.5	27.10	27.10		7.91	7.91		30.59	30.59		73.7	73.1		4.94	4.91		11.50	11.46		10	
22/8/2016	10:45	Fine	Middle	2.5	27.20	27.20	27.15	8.19	8.19	8.20	29.92	29.92	30.03	59.5	58.4	58.0	4.00	3.93	3.90	7.45	7.31	7.42	6	6.50
	10:47		Middle	2.5	27.10	27.10		8.20	8.20		30.14	30.14		57.4	56.7		3.86	3.81		7.30	7.62		7	
24/8/2016	11:12	Fine	Middle	2.5	27.70	27.70	27.70	7.81	7.81	7.82	29.87	29.87	29.87	65.1	67.0	66.9	4.34	4.47	4.46	5.29	5.25	5.17	4	3.50
	11:14		Middle	2.5	27.70	27.70		7.82	7.82		29.87	29.87		67.9	67.6		4.53	4.50		5.13	5.00		3	
26/8/2016	14:25	Sunny	Middle	3.0	28.90	28.90	28.95	7.90	7.90	7.91	29.60	29.60	29.60	94.1	94.0	94.3	6.15	6.14	6.16	3.31	3.27	3.26	3	2.50
	14:27		Middle	3.0	29.00	29.00		7.91	7.91		29.60	29.60		94.6	94.3		6.18	6.15		3.24	3.22		2	

Remarks:
Single underline denotes exceedance over Action Level.
Double underline denotes exceedance over Limit Level.



**Water Monitoring Result at RW21-P789 - Sun Hung Kai Centre
Mid-Flood Tide**

Date	Time	Weater Condition	Sampling Depth		Water Temperature			pH			Salinity			DO Saturation			DO			Turbidity			Suspended Solids	
					°C			-			ppt			%			mg/L			NTU			mg/L	
					Value	Average		Value	Average		Value	Average		Value	Average		Value	Average		Value	Average		Value	Average
27/7/2016	14:35	Fine	Middle	3.5	27.60	27.60	27.95	8.30	8.30	8.28	31.93	31.93	31.94	88.5	89.0	87.9	5.80	5.93	5.78	4.86	4.80	4.83	9	8.50
	14:37		Middle	3.5	28.30	28.30		8.25	8.25		31.94	31.94		86.6	87.5		5.66	5.72		4.79	4.85		8	
29/7/2016	16:16	Fine	Middle	3.5	26.80	26.80	26.85	8.24	8.24	8.26	31.17	31.17	31.15	71.4	70.1	69.2	4.80	4.71	4.63	5.57	5.37	5.38	7	6.50
	16:18		Middle	3.5	26.90	26.90		8.28	8.28		31.13	31.13		68.4	66.7		4.52	4.48		5.36	5.23		6	
1/8/2016	-	Strong Wind Signal No. 3	Middle	-	-	-	-	-	-	-	-	-	-	-	-	-	-	-	-	-	-	-	-	
	-		Middle	-	-	-	-	-	-	-	-	-	-	-	-	-	-	-	-	-	-	-	-	
3/8/2016	18:10	Cloudy	Middle	3.0	25.90	25.90	25.95	7.90	7.90	7.90	29.86	29.86	29.86	74.9	74.9	74.5	5.12	5.12	5.10	5.41	5.50	5.50	5	5.00
	18:11		Middle	3.0	26.00	26.00		7.90	7.90		29.85	29.85		74.6	73.4		5.11	5.03		5.56	5.53		5	
5/8/2016	20:57	Fine	Middle	3.5	26.40	26.40	26.45	7.50	7.50	7.56	31.16	31.16	31.17	67.5	67.9	67.6	4.55	4.58	4.56	4.72	4.74	4.69	5	5.50
	20:58		Middle	3.5	26.50	26.50		7.62	7.62		31.17	31.17		67.3	67.6		4.54	4.56		4.67	4.64		6	
8/8/2016	10:25	Fine	Middle	3.5	26.50	26.50	26.55	8.13	8.13	8.12	31.18	31.18	31.16	49.4	49.5	49.5	3.38	3.34	3.35	3.70	3.72	3.76	5	4.50
	10:27		Middle	3.5	26.60	26.60		8.11	8.11		31.13	31.13		49.8	49.3		3.36	3.33		3.79	3.81		4	
10/8/2016	1:45	Cloudy	Middle	3.5	26.10	26.10	26.15	7.77	7.77	7.77	30.91	30.91	30.92	70.1	70.3	70.2	4.76	4.77	4.77	1.49	1.38	1.42	4	3.50
	1:46		Middle	3.5	26.20	26.20		7.76	7.76		30.92	30.92		70.4	70.1		4.78	4.76		1.42	1.40		3	
13/8/2016	2:06	Cloudy	Middle	3.5	26.60	26.60	26.65	7.67	7.67	7.67	30.56	30.56	30.56	74.6	74.8	73.7	5.03	5.04	4.97	3.99	3.80	3.94	4	4.00
	2:07		Middle	3.5	26.70	26.70		7.67	7.67		30.55	30.55		73.0	72.2		4.92	4.87		3.92	4.06		4	
15/8/2016	16:45	Cloudy	Middle	3.5	25.80	27.50	26.28	8.20	8.20	8.22	30.67	30.67	30.65	76.6	76.3	76.5	5.24	5.22	5.23	3.25	3.24	3.25	6	5.50
	16:47		Middle	3.5	25.90	25.90		8.23	8.23		30.68	30.58		76.6	76.5		5.24	5.23		3.26	3.26		5	
17/8/2016	17:15	Cloudy	Middle	3.0	26.30	26.30	26.35	7.91	7.91	7.91	31.12	31.12	31.12	71.1	70.9	71.1	4.81	4.79	4.81	4.40	4.60	4.57	8	8.00
	17:16		Middle	3.0	26.40	26.40		7.91	7.91		31.11	31.11		71.4	70.9		4.83	4.79		4.62	4.64		8	
19/8/2016	18:45	Cloudy	Middle	3.0	27.10	27.10	27.15	7.71	7.71	7.72	30.22	30.22	30.23	71.7	72.9	72.1	4.80	4.89	4.83	8.68	8.77	8.77	9	8.50
	18:46		Middle	3.0	27.20	27.20		7.73	7.73		30.23	30.23		71.6	72.0		4.80	4.82		8.82	8.81		8	
22/8/2016	11:06	Fine	Middle	3.5	27.10	27.10	27.10	8.19	8.19	8.19	29.99	29.99	30.02	57.7	57.0	56.7	3.88	3.83	3.81	7.25	7.15	7.17	8	8.50
	11:08		Middle	3.5	27.10	27.10		8.19	8.19		30.05	30.05		56.4	55.5		3.78	3.73		7.12	7.15		9	
24/8/2016	11:21	Fine	Middle	3.5	27.90	27.90	27.95	7.77	7.77	7.78	29.96	29.96	29.94	76.0	77.1	76.0	5.04	5.11	5.04	5.40	5.38	5.34	3	3.00
	11:23		Middle	3.5	28.00	28.00		7.79	7.79		29.92	29.92		75.8	75.2		5.02	4.98		5.30	5.28		3	
26/8/2016	15:05	Sunny	Middle	4.0	29.30	29.30	29.40	7.85	7.85	7.86	29.52	29.52	29.52	92.5	91.6	91.8	6.01	5.94	5.95	4.22	4.19	4.16	2	2.00
	15:07		Middle	4.0	29.50	29.50		7.86	7.86		29.52	29.52		91.6	91.3		5.94	5.92		4.17	4.07		2	

Remarks:
Single underline denotes exceedance over Action Level.
Double underline denotes exceedance over Limit Level.



**Water Monitoring Result at WSD19 - Sheung Wan
Mid-Flood Tide**

Date	Time	Weather Condition	Sampling Depth		Water Temperature			pH			Salinity			DO Saturation			DO			Turbidity			Suspended Solids	
					°C			-			ppt			%			mg/L			NTU			mg/L	
			m		Value	Average		Value	Average		Value	Average		Value	Average		Value	Average		Value	Average		Value	Average
27/7/2016	10:30	Fine	Middle	3.5	26.50	26.50	26.70	8.21	8.21	8.20	31.23	31.23	31.22	71.9	71.9	70.9	4.83	4.83	4.76	8.47	8.21	8.22	9	9.00
	10:32		Middle	3.5	26.90	26.90		8.19	8.19		31.21	31.21		71.3	68.6		4.78	4.60		8.15	8.06		9	
29/7/2016	14:35	Fine	Middle	3.5	28.90	28.90	29.05	8.32	8.32	8.33	30.58	30.58	30.58	95.2	96.0	95.3	6.17	6.23	6.18	4.03	3.85	3.91	6	5.50
	14:37		Middle	3.5	29.20	29.20		8.34	8.34		30.57	30.57		95.6	94.4		6.19	6.11		3.84	3.91		5	
1/8/2016	-	Strong Wind Signal No. 3	Middle	-	-	-	-	-	-	-	-	-	-	-	-	-	-	-	-	-	-	-	-	
	-		Middle	-	-	-	-	-	-	-	-	-	-	-	-	-	-	-	-	-	-	-	-	
3/8/2016	19:05	Cloudy	Middle	3.0	25.30	25.30	25.40	7.71	7.71	7.72	30.77	30.77	30.77	70.6	71.0	70.5	4.85	4.88	4.84	6.77	6.82	6.75	6	6.00
	19:06		Middle	3.0	25.50	25.50		7.72	7.72		30.77	30.77		70.1	70.3		4.81	4.82		6.72	6.67		6	
5/8/2016	22:50	Fine	Middle	3.0	26.40	26.40	26.45	7.76	7.76	7.77	31.30	31.30	31.30	74.8	75.7	75.1	5.04	5.10	5.06	7.82	7.79	7.75	4	4.50
	22:51		Middle	3.0	26.50	26.50		7.77	7.77		31.30	31.30		75.0	75.0		5.05	5.05		7.69	7.70		5	
8/8/2016	9:00	Fine	Middle	3.5	27.20	27.20	27.30	8.22	8.22	8.22	30.60	30.60	30.60	80.1	78.8	79.3	5.35	5.26	5.29	4.34	4.28	4.28	4	3.50
	9:02		Middle	3.5	27.40	27.40		8.22	8.22		30.60	30.60		79.7	78.5		5.32	5.24		4.25	4.23		3	
10/8/2016	23:01	Cloudy	Middle	3.0	26.00	26.00	26.05	7.74	7.74	7.75	31.05	31.05	31.05	71.8	72.8	71.9	4.88	4.95	4.89	2.30	2.23	2.24	3	3.50
	23:02		Middle	3.0	26.10	26.10		7.75	7.75		31.05	31.05		71.9	71.0		4.89	4.82		2.22	2.20		4	
13/8/2016	2:50	Cloudy	Middle	3.5	26.40	26.40	26.40	7.68	7.68	7.70	30.53	30.53	30.53	72.4	74.6	73.0	4.90	5.05	4.94	1.88	1.93	1.95	3	3.50
	2:51		Middle	3.5	26.40	26.40		7.72	7.72		30.53	30.53		72.2	72.6		4.89	4.92		1.97	2.01		4	
15/8/2016	15:50	Cloudy	Middle	3.5	26.20	26.20	26.25	8.12	8.12	8.16	30.56	30.56	30.56	84.5	83.8	83.8	5.74	5.69	5.69	3.39	3.39	3.33	7	6.00
	15:52		Middle	3.5	26.30	26.30		8.20	8.20		30.56	30.56		83.0	84.0		5.64	5.70		3.27	3.25		5	
17/8/2016	19:05	Cloudy	Middle	3.0	26.30	26.30	26.35	7.86	7.86	7.87	31.19	31.19	31.19	70.4	70.9	70.6	4.75	4.79	4.77	5.69	5.66	5.66	6	6.50
	19:06		Middle	3.0	26.40	26.40		7.87	7.87		31.19	31.19		71.1	70.1		4.80	4.73		5.64	5.63		7	
19/8/2016	19:45	Cloudy	Middle	3.0	26.60	26.60	26.65	7.68	7.68	7.68	30.23	30.23	30.23	70.6	71.0	71.2	4.77	4.80	4.81	8.14	8.15	8.09	8	7.50
	19:46		Middle	3.0	26.70	26.70		7.68	7.68		30.22	30.22		71.2	72.0		4.81	4.86		8.04	8.04		7	
22/8/2016	8:11	Fine	Middle	3.5	27.00	27.00	27.10	8.29	8.29	8.25	29.71	29.71	29.70	51.8	54.6	53.0	3.49	3.68	3.57	9.11	9.15	9.18	10	10.00
	8:13		Middle	3.5	27.20	27.20		8.20	8.20		29.69	29.69		53.3	52.1		3.59	3.50		9.22	9.23		10	
24/8/2016	9:53	Fine	Middle	3.5	27.80	27.80	27.85	7.64	7.64	7.66	29.63	29.63	29.61	70.2	70.3	70.4	4.68	4.68	4.69	5.77	5.73	5.75	3	3.00
	9:55		Middle	3.5	27.90	27.90		7.68	7.68		29.59	29.59		70.4	70.6		4.69	4.70		5.75	5.76		3	
26/8/2016	11:25	Sunny	Middle	3.5	29.30	29.30	29.35	7.73	7.73	7.76	29.14	29.14	29.17	91.8	91.1	91.1	5.98	5.93	5.93	8.65	8.64	8.57	9	9.50
	11:27		Middle	3.5	29.40	29.40		7.78	7.78		29.19	29.19		90.8	90.6		5.91	5.89		8.38	8.59		10	

Remarks:
Single underline denotes exceedance over Action Level.
Double underline denotes exceedance over Limit Level.



**Water Monitoring Result at C7 - Windsor House
Mid-Ebb Tide**

Date	Time	Weather Condition	Sampling Depth		Water Temperature		pH			Salinity		DO Saturation		DO		Turbidity		Suspended Solids						
					°C		-		ppt		%		mg/L		NTU		mg/L							
					Value	Average	Value	Average	Value	Average	Value	Average	Value	Average	Value	Average	Value	Average						
27/7/2016	16:06	Fine	Middle	-	28.50	28.50	28.85	8.06	8.06	8.06	31.37	31.37	31.36	81.4	83.2	81.8	5.26	5.37	5.29	3.50	3.48	3.50	4	4.00
	16:07		Middle	-	29.20	29.20		8.05	8.05		31.34	31.34		82.0	80.7		5.31	5.20		3.50	3.53		4	
29/7/2016	11:33	Fine	Middle	-	27.60	27.60	27.65	8.07	8.07	8.08	30.48	30.48	30.50	62.7	61.6	61.3	4.17	4.04	4.04	3.89	4.23	4.13	3	3.50
	11:35		Middle	-	27.70	27.70		8.08	8.08		30.52	30.52		61.1	59.6		4.03	3.93		4.36	4.04		4	
1/8/2016	11:45	Cloudy	Middle	-	26.20	26.20	26.25	8.10	8.10	8.10	31.81	31.81	31.81	70.2	71.3	71.2	4.74	4.82	4.81	2.93	2.91	2.93	2	2.00
	11:47		Middle	-	26.30	26.30		8.10	8.10		31.80	31.80		71.4	72.0		4.82	4.87		2.90	2.99		2	
3/8/2016	15:45	Cloudy	Middle	-	25.60	25.60	25.65	8.07	8.07	8.07	31.00	31.00	31.00	73.7	74.0	73.7	5.05	5.07	5.05	11.67	11.84	11.81	13	12.50
	15:47		Middle	-	25.70	25.70		8.07	8.07		30.99	30.99		73.8	73.4		5.05	5.03		11.80	11.91		12	
5/8/2016	15:16	Fine	Middle	-	26.30	26.30	26.40	7.96	7.96	7.97	31.26	31.26	31.25	58.9	57.8	57.5	3.93	3.91	3.87	3.43	3.44	3.45	3	4.00
	15:18		Middle	-	26.50	26.50		7.98	7.98		31.24	31.24		57.3	56.1		3.83	3.80		3.50	3.44		5	
8/8/2016	15:52	Fine	Middle	-	27.50	27.50	27.55	7.92	7.92	7.93	30.68	30.68	30.66	61.8	62.4	62.4	4.11	4.15	4.15	3.89	3.82	3.84	3	3.00
	15:54		Middle	-	27.60	27.60		7.94	7.94		30.64	30.64		62.7	62.5		4.17	4.15		3.83	3.81		3	
11/8/2016	5:35	Cloudy	Middle	-	26.50	26.50	26.55	7.77	7.77	7.77	31.22	31.22	31.22	69.6	69.5	68.6	4.69	4.68	4.62	3.81	3.72	3.71	10	11.00
	5:36		Middle	-	26.60	26.60		7.77	7.77		31.22	31.22		67.3	67.9		4.54	4.57		3.70	3.61		12	
13/8/2016	9:15	Fine	Middle	-	27.10	27.10	27.05	7.84	7.84	7.89	30.37	30.37	30.36	75.0	74.5	74.5	5.05	5.01	5.02	4.91	4.90	4.90	7	7.00
	9:17		Middle	-	27.00	27.00		7.94	7.94		30.35	30.35		74.6	74.0		5.02	4.98		4.89	4.90		7	
15/8/2016	11:37	Fine	Middle	-	26.40	26.40	26.40	8.05	8.05	8.08	31.34	31.34	31.37	74.2	73.5	72.9	5.01	4.96	4.92	3.43	3.30	3.35	4	3.50
	11:39		Middle	-	26.40	26.40		8.10	8.10		31.39	31.39		72.0	72.0		4.86	4.85		3.28	3.37		3	
17/8/2016	11:50	Fine	Middle	-	26.40	26.40	26.40	8.16	8.16	8.17	30.69	30.69	30.69	76.6	76.8	76.2	5.20	5.21	5.16	6.22	6.18	6.14	8	8.00
	11:52		Middle	-	26.40	26.40		8.17	8.17		30.68	30.68		76.0	75.2		5.14	5.10		6.09	6.06		8	
19/8/2016	13:35	Cloudy	Middle	-	28.10	28.10	28.20	8.13	8.13	8.15	30.07	30.07	30.07	75.1	75.7	75.2	4.95	4.99	4.96	2.65	2.65	2.65	3	2.50
	13:37		Middle	-	28.30	28.30		8.16	8.16		30.06	30.06		75.2	74.6		4.96	4.92		2.64	2.65		2	
22/8/2016	16:10	Fine	Middle	-	28.30	28.30	28.40	7.99	7.99	8.02	29.74	29.74	28.48	75.5	75.5	75.4	4.98	4.98	4.97	3.53	3.51	3.51	5	5.50
	16:12		Middle	-	28.50	28.50		8.05	8.05		24.72	29.73		75.3	75.4		4.96	4.96		3.50	3.50		6	
24/8/2016	17:00	Fine	Middle	-	29.10	29.10	29.20	7.70	7.70	7.71	29.68	29.68	29.68	94.0	93.6	93.6	6.11	6.09	6.08	6.36	6.17	6.15	5	4.50
	17:02		Middle	-	29.30	29.30		7.72	7.72		29.67	29.67		93.4	93.3		6.07	6.06		6.05	6.02		4	
26/8/2016	9:15	Fine	Middle	-	28.50	28.50	28.55	7.69	7.69	7.70	28.57	28.57	29.07	84.1	85.6	85.5	5.53	5.64	5.63	14.00	13.80	<u>13.71</u>	9	8.50
	9:17		Middle	-	28.60	28.60		7.71	7.71		29.57	29.57		86.3	86.1		5.68	5.66		13.92	13.11		8	

Remarks:
Single underline denotes exceedance over Action Level.
Double underline denotes exceedance over Limit Level.



**Water Monitoring Result at C1 - HKCEC
Mid-Ebb Tide**

Date	Time	Weather Condition	Sampling Depth		Water Temperature		pH			Salinity		DO Saturation		DO		Turbidity		Suspended Solids						
					°C		-		ppt		%		mg/L		NTU		mg/L							
			m	Value	Average	Value	Average	Value	Average	Value	Average	Value	Average	Value	Average	Value	Average	Value	Average					
27/7/2016	17:25	Fine	Middle	2.5	26.50	26.50	26.60	8.43	8.43	8.43	31.08	31.08	31.08	96.7	98.1	98.0	6.52	6.61	6.60	4.15	4.14	4.15	11	11.00
	17:27		Middle	2.5	26.70	26.70		8.43	8.43		31.07	31.07		98.6	98.5		6.64	6.63		4.18	4.14		11	
29/7/2016	10:40	Fine	Middle	2.5	26.80	26.80	26.80	8.45	8.45	8.45	30.13	30.13	30.14	81.4	80.3	79.2	5.50	5.42	5.35	4.44	4.56	4.48	3	3.50
	10:42		Middle	2.5	26.80	26.80		8.44	8.44		30.15	30.15		78.4	76.5		5.29	5.17		4.49	4.42		4	
1/8/2016	10:57	Cloudy	Middle	2.5	26.40	26.40	26.45	8.43	8.43	8.44	30.33	30.33	30.33	79.6	71.1	75.3	5.40	5.37	5.25	3.01	2.93	2.99	4	4.00
	10:59		Middle	2.5	26.50	26.50		8.44	8.44		30.32	30.32		76.2	74.2		5.17	5.04		3.01	3.00		4	
3/8/2016	15:25	Cloudy	Middle	3.0	25.60	25.60	25.62	8.15	8.15	8.15	29.77	29.77	29.78	72.9	73.6	73.5	5.04	5.09	5.08	4.51	4.68	4.67	3	3.50
	15:27		Middle	3.0	25.60	25.69		8.15	8.15		29.78	29.79		73.9	73.6		5.10	5.07		4.78	4.71		4	
5/8/2016	14:28	Fine	Middle	2.5	26.10	26.10	26.15	8.11	8.11	8.11	30.94	30.94	30.94	67.4	65.8	65.2	4.58	4.47	4.43	3.82	3.75	3.81	3	3.00
	14:30		Middle	2.5	26.20	26.20		8.11	8.11		30.94	30.94		64.5	63.2		4.38	4.28		3.79	3.88		3	
8/8/2016	15:13	Fine	Middle	2.5	27.40	27.40	27.40	8.14	8.14	8.14	30.43	30.43	30.45	65.6	64.8	65.2	4.38	3.32	4.10	2.55	2.55	2.52	<2	<2
	15:15		Middle	2.5	27.40	27.4		8.14	8.14		30.47	30.47		65.5	64.9		4.37	4.33		2.49	2.47		<2	
11/8/2016	4:14	Cloudy	Middle	3.0	26.60	26.60	26.60	7.70	7.70	7.71	30.95	30.94	30.97	70.9	71.2	70.7	4.79	4.80	4.78	2.47	2.54	2.47	4	3.50
	4:15		Middle	3.0	26.60	26.60		7.72	7.72		30.99	30.99		70.4	70.3		4.75	4.76		2.50	2.35		3	
13/8/2016	8:25	Fine	Middle	3.0	26.30	26.30	26.30	8.26	8.26	8.26	30.56	30.56	30.55	82.6	83.4	83.0	5.61	5.66	5.64	3.81	3.79	3.80	3	3.00
	8:27		Middle	3.0	26.30	26.30		8.26	8.26		30.54	30.54		83.3	82.8		5.66	5.62		3.80	3.80		3	
15/8/2016	10:35	Fine	Middle	3.0	26.00	26.00	26.05	8.34	8.34	8.34	30.88	30.88	30.88	82.8	82.1	83.2	5.64	5.59	5.67	1.64	1.63	1.62	3	3.00
	10:37		Middle	3.0	26.10	26.10		8.34	8.34		30.87	30.87		83.6	84.3		5.70	5.74		1.63	1.56		3	
17/8/2016	11:06	Fine	Middle	3.5	26.30	26.30	26.30	8.34	8.34	8.34	31.18	31.18	31.18	76.2	77.5	76.7	5.16	5.25	5.19	4.52	4.64	4.68	8	7.50
	11:08		Middle	3.5	26.30	26.30		8.34	8.34		31.18	31.18		76.5	76.4		5.18	5.17		4.77	4.77		7	
19/8/2016	11:05	Cloudy	Middle	3.0	27.20	27.20	27.25	8.30	8.30	8.30	30.47	30.47	30.47	74.6	74.1	74.3	4.99	4.96	4.97	8.37	8.38	8.38	9	9.50
	11:07		Middle	3.0	27.30	27.30		8.30	8.30		30.46	30.46		74.1	74.3		4.95	4.97		8.37	8.38		10	
22/8/2016	15:20	Fine	Middle	3.0	28.50	28.50	28.55	8.16	8.16	8.16	29.63	29.63	29.63	71.6	72.6	72.3	4.71	4.77	4.75	3.86	3.86	3.85	6	5.00
	15:22		Middle	3.0	28.60	28.60		8.16	8.16		29.63	29.63		72.7	72.2		4.78	4.75		3.83	3.83		4	
24/8/2016	16:05	Fine	Middle	2.5	28.10	28.10	28.15	7.86	7.86	7.86	30.24	30.24	30.24	91.7	92.7	92.0	6.06	6.12	6.07	4.07	4.06	4.08	2	2.50
	16:07		Middle	2.5	28.20	28.20		7.86	7.86		30.23	30.23		92.4	91.1		6.10	6.01		4.11	4.06		3	
26/8/2016	8:26	Fine	Middle	3.5	28.10	28.10	28.10	7.92	7.92	7.92	29.21	29.21	29.22	91.4	89.1	87.6	6.07	5.91	5.81	2.00	1.98	1.99	<2	2.00
	8:28		Middle	3.5	28.10	28.10		7.92	7.92		29.22	29.22		86.1	83.6		5.72	5.55		1.98	1.98		2	

Remarks:
Single underline denotes exceedance over Action Level.
Double underline denotes exceedance over Limit Level.



**Water Monitoring Result at P1 - HKCEC Phase I
Mid-Ebb Tide**

Date	Time	Weather Condition	Sampling Depth		Water Temperature		pH			Salinity		DO Saturation		DO		Turbidity		Suspended Solids						
					°C		-		ppt		%		mg/L		NTU		mg/L							
			m	Value	Average	Value	Average	Value	Average	Value	Average	Value	Average	Value	Average	Value	Average	Value	Average					
27/7/2016	17:05	Fine	Middle	2.5	27.70	27.70	27.95	8.32	8.32	8.37	31.20	31.20	31.18	104.6	104.8	104.3	6.88	6.80	6.83	4.47	4.28	4.37	9	8.00
	17:07		Middle	2.5	28.20	28.20		8.41	8.41		31.16	31.16		103.8	104.1		6.82	6.83		4.35	4.36		7	
29/7/2016	10:24	Fine	Middle	2.5	28.00	28.00	28.00	8.33	8.33	8.36	30.16	30.16	30.17	72.5	71.8	72.2	4.86	4.75	4.79	4.00	3.92	3.95	6	6.00
	10:26		Middle	2.5	28.00	28.00		8.38	8.38		30.18	30.18		71.9	72.7		4.75	4.81		3.95	3.92		6	
1/8/2016	10:41	Cloudy	Middle	2.5	27.10	27.10	27.25	8.33	8.33	8.36	30.77	30.77	30.70	76.6	74.6	75.3	5.12	4.99	5.03	3.89	3.89	3.94	3	3.50
	10:43		Middle	2.5	27.40	27.40		8.38	8.38		30.63	30.63		73.9	76.1		4.94	5.08		3.99	4.00		4	
3/8/2016	15:05	Cloudy	Middle	3.0	25.90	25.90	25.95	8.14	8.14	8.15	30.08	30.08	30.08	80.7	80.4	80.4	5.53	5.51	5.52	5.64	5.66	5.69	6	5.00
	15:07		Middle	3.0	26.00	26.00		8.15	8.15		30.08	30.08		80.3	80.3		5.51	5.51		5.65	5.79		4	
5/8/2016	14:12	Fine	Middle	2.5	27.80	27.80	27.95	8.19	8.19	8.18	31.69	31.69	31.63	55.1	54.9	53.8	3.62	3.57	3.51	4.79	4.79	4.79	4	4.00
	14:14		Middle	2.5	28.10	28.10		8.16	8.16		31.57	31.57		53.3	52.0		3.45	3.41		4.79	4.79		4	
8/8/2016	14:57	Fine	Middle	2.5	28.70	28.70	28.85	8.12	8.12	8.13	30.64	30.64	30.64	70.5	70.1	68.8	4.55	4.54	4.47	3.39	3.36	3.37	3	3.00
	14:59		Middle	2.5	29.00	29.00		8.13	8.13		30.64	30.64		68.2	66.2		4.44	4.34		3.37	3.37		3	
11/8/2016	3:45	Cloudy	Middle	3.0	26.80	26.80	26.75	7.79	7.79	7.79	31.24	31.24	31.24	71.6	72.8	73.2	4.82	4.90	4.93	2.15	2.17	2.19	4	4.50
	3:46		Middle	3.0	26.70	26.70		7.79	7.79		31.24	31.24		74.0	74.3		4.98	5.00		2.20	2.22		5	
13/8/2016	8:05	Fine	Middle	3.0	26.60	26.60	26.70	8.18	8.18	8.21	30.54	30.54	30.54	86.9	87.4	86.8	5.87	5.90	5.86	3.37	3.36	3.41	3	3.00
	8:07		Middle	3.0	26.80	26.80		8.23	8.23		30.53	30.53		86.2	86.6		5.82	5.84		3.35	3.55		3	
15/8/2016	10:15	Fine	Middle	3.0	26.30	26.30	26.40	8.29	8.29	8.32	30.78	30.78	30.78	87.4	85.2	86.2	5.91	5.76	5.86	1.97	2.03	2.03	3	3.00
	10:17		Middle	3.0	26.50	26.50		8.34	8.34		30.78	30.78		85.6	86.5		5.86	5.90		2.06	2.06		3	
17/8/2016	10:50	Fine	Middle	3.5	26.40	26.40	26.45	8.31	8.31	8.32	31.28	31.28	31.29	71.8	68.6	70.5	4.85	4.63	4.74	4.91	4.90	4.90	8	8.00
	10:52		Middle	3.5	26.50	26.50		8.33	8.33		31.29	31.29		71.2	70.2		4.73	4.73		4.89	4.89		8	
19/8/2016	10:45	Cloudy	Middle	3.0	27.80	27.80	27.80	8.29	8.29	8.30	30.50	30.50	30.50	77.6	77.6	77.4	5.15	5.15	5.13	8.53	8.56	8.56	8	8.00
	10:47		Middle	3.0	27.80	27.80		8.31	8.31		30.50	30.50		77.2	77.0		5.12	5.11		8.55	8.58		8	
22/8/2016	15:00	Fine	Middle	3.0	28.70	28.70	28.80	8.18	8.18	8.18	29.63	29.63	29.63	74.4	75.1	74.5	4.87	4.92	4.87	3.43	3.46	3.46	3	3.00
	15:02		Middle	3.0	28.90	28.90		8.17	8.17		29.63	29.63		73.8	74.5		4.83	4.87		3.47	3.48		3	
24/8/2016	15:45	Fine	Middle	2.5	28.90	28.90	29.00	7.79	7.79	7.80	30.17	30.17	30.17	96.4	96.4	96.0	6.28	6.27	6.25	3.09	3.01	3.01	2	2.50
	15:47		Middle	2.5	29.10	29.10		7.81	7.81		30.17	30.17		95.7	95.4		6.23	6.21		3.00	2.93		3	
26/8/2016	8:10	Fine	Middle	3.5	28.40	28.40	28.40	7.88	7.88	7.88	29.38	29.38	29.38	90.5	91.4	92.0	5.88	6.04	6.05	1.49	1.50	1.50	<2	<2
	8:12		Middle	3.5	28.40	28.40		7.88	7.88		29.38	29.38		93.3	92.9		6.16	6.13		1.50	1.50		<2	

Remarks:
Single underline denotes exceedance over Action Level.
Double underline denotes exceedance over Limit Level.



**Water Monitoring Result at P3 - APA
Mid-Ebb Tide**

Date	Time	Weather Condition	Sampling Depth		Water Temperature		pH			Salinity		DO Saturation		DO		Turbidity		Suspended Solids						
					°C		-		ppt		%		mg/L		NTU		mg/L							
					Value	Average	Value	Average	Value	Average	Value	Average	Value	Average	Value	Average	Value	Average						
27/7/2016	17:10	Fine	Middle	2.5	27.30	27.30	27.35	8.44	8.44	8.44	31.06	31.06	31.06	100.9	101.7	101.4	6.72	6.77	6.74	4.58	4.58	4.46	7	7.00
	17:12		Middle	2.5	27.40	27.40		8.44	8.44		31.06	31.06		101.6	101.2		6.75	6.73		4.34	4.32		7	
29/7/2016	10:28	Fine	Middle	2.5	27.30	27.30	27.35	8.42	8.42	8.43	30.17	30.17	30.16	80.2	79.1	80.4	5.36	5.29	5.37	3.61	3.80	3.83	4	4.00
	10:30		Middle	2.5	27.40	27.40		8.43	8.43		30.15	30.15		81.4	80.7		5.44	5.39		3.99	3.91		4	
1/8/2016	10:45	Cloudy	Middle	2.5	26.90	26.90	26.85	8.40	8.40	8.41	30.48	30.48	30.48	76.9	77.0	77.5	5.19	5.19	5.23	3.26	3.24	3.31	3	3.00
	10:47		Middle	2.5	26.80	26.80		8.42	8.42		30.47	30.47		78.6	77.4		5.30	5.24		3.36	3.39		3	
3/8/2016	15:10	Cloudy	Middle	3.0	25.40	25.40	25.45	8.16	8.16	8.16	30.22	30.22	30.22	79.4	80.0	79.2	5.49	5.53	5.47	4.59	4.58	4.58	5	4.50
	15:12		Middle	3.0	25.50	25.50		8.16	8.16		30.21	30.21		79.4	77.8		5.49	5.37		4.58	4.58		4	
5/8/2016	14:16	Fine	Middle	2.5	26.80	26.80	26.95	8.17	8.17	8.16	31.13	31.13	31.07	64.0	62.3	61.7	4.36	4.18	4.17	4.00	4.03	3.92	3	2.50
	14:18		Middle	2.5	27.10	27.10		8.14	8.14		31.00	31.00		60.9	59.6		4.05	4.08		3.84	3.82		2	
8/8/2016	15:01	Fine	Middle	2.5	28.10	28.10	28.15	8.15	8.15	8.15	30.49	30.49	30.47	65.3	63.9	64.5	4.30	4.21	4.25	3.76	3.78	3.78	2	2.50
	15:03		Middle	2.5	28.20	28.20		8.15	8.15		30.44	30.44		63.7	65.1		4.20	4.29		3.79	3.79		3	
11/8/2016	3:52	Cloudy	Middle	3.0	26.90	26.90	26.90	7.77	7.77	7.77	31.21	31.21	31.21	72.7	72.3	72.5	4.89	4.87	4.88	1.76	1.74	1.70	5	5.00
	3:53		Middle	3.0	26.90	26.90		7.77	7.77		31.21	31.21		72.4	72.5		4.87	4.89		1.66	1.63		5	
13/8/2016	8:10	Fine	Middle	3.0	26.40	26.40	26.45	8.24	8.24	8.25	30.51	30.51	30.51	88.1	88.2	87.5	5.97	5.98	5.93	4.13	4.17	4.17	3	2.50
	8:12		Middle	3.0	26.50	26.50		8.25	8.25		30.51	30.51		87.4	86.3		5.92	5.83		4.18	4.18		2	
15/8/2016	10:20	Fine	Middle	3.0	26.00	26.00	26.05	8.35	8.35	8.35	30.76	30.76	30.79	86.5	86.2	86.3	5.90	5.88	5.89	2.08	2.07	2.06	2	2.00
	10:22		Middle	3.0	26.10	26.10		8.35	8.35		30.81	30.81		86.4	86.2		5.89	5.87		2.05	2.02		2	
17/8/2016	10:54	Fine	Middle	3.5	26.20	26.20	26.25	8.35	8.35	8.35	31.28	31.28	31.29	71.9	71.8	70.6	4.81	4.68	4.72	5.81	5.83	5.87	10	10.50
	10:56		Middle	3.5	26.30	26.30		8.35	8.35		31.29	31.29		70.2	68.4		4.75	4.63		5.91	5.91		11	
19/8/2016	10:50	Cloudy	Middle	3.0	27.30	27.30	27.35	8.32	8.32	8.32	30.49	30.49	30.49	74.8	74.8	74.6	5.00	4.99	4.98	6.99	6.99	7.04	7	7.50
	10:52		Middle	3.0	27.40	27.40		8.32	8.32		30.48	30.48		74.5	74.3		4.97	4.96		7.08	7.11		8	
22/8/2016	15:05	Fine	Middle	3.0	28.40	28.40	28.45	8.18	8.18	8.18	29.58	29.58	29.59	73.6	74.4	73.9	4.86	4.90	4.87	3.59	3.59	3.58	2	2.50
	15:07		Middle	3.0	28.50	28.50		8.18	8.18		29.59	29.59		74.1	73.3		4.88	4.83		3.59	3.56		3	
24/8/2016	15:50	Fine	Middle	2.5	28.50	28.50	28.55	7.82	7.82	7.83	30.13	30.13	30.13	92.9	93.6	93.4	6.09	6.14	6.12	3.49	3.45	3.46	<2	2.00
	15:52		Middle	2.5	28.60	28.60		7.84	7.84		30.13	30.13		93.1	94.1		6.09	6.16		3.44	3.46		2	
26/8/2016	8:14	Fine	Middle	3.5	28.10	28.10	28.15	7.90	7.90	7.91	29.13	29.13	29.13	95.8	94.3	92.8	6.36	6.26	6.16	1.62	1.63	1.68	<2	<2
	8:16		Middle	3.5	28.20	28.20		7.91	7.91		29.13	29.13		90.4	90.6		6.01	6.02		1.67	1.80		<2	

Remarks:
Single underline denotes exceedance over Action Level.
Double underline denotes exceedance over Limit Level.



**Water Monitoring Result at P4 - SOC
Mid-Ebb Tide**

Date	Time	Weather Condition	Sampling Depth		Water Temperature		pH			Salinity		DO Saturation		DO		Turbidity		Suspended Solids						
					°C		-		ppt		%		mg/L		NTU		mg/L							
			m	Value	Average	Value	Average	Value	Average	Value	Average	Value	Average	Value	Average	Value	Average	Value	Average					
27/7/2016	17:15	Fine	Middle	2.5	26.70	26.70	26.75	8.45	8.45	8.45	31.04	31.04	31.04	101.0	102.2	101.5	6.79	6.86	6.83	4.70	4.70	4.68	8	7.50
	17:17		Middle	2.5	26.80	26.80		8.45	8.45	8.45	31.03	31.03		31.03	101.6		101.0	101.5		6.89	6.79		6.83	
29/7/2016	10:32	Fine	Middle	2.5	26.80	26.80	26.85	8.45	8.45	8.45	30.18	30.18	30.16	84.4	84.9	82.6	5.76	5.78	5.60	3.36	3.52	3.45	5	4.50
	10:34		Middle	2.5	26.90	26.90		8.45	8.45	8.45	30.14	30.14		30.14	81.4		79.7	82.6		5.49	5.37		5.60	
1/8/2016	10:49	Cloudy	Middle	2.5	26.60	26.40	26.50	8.42	8.42	8.43	30.55	30.55	30.54	78.1	76.6	76.4	5.29	5.19	5.18	3.27	3.10	3.12	3	4.00
	10:51		Middle	2.5	26.50	26.50		8.43	8.43	8.43	30.53	30.53		30.53	75.9		75.1	76.4		5.14	5.09		5.18	
3/8/2016	15:15	Cloudy	Middle	3.0	25.30	25.30	25.35	8.16	8.16	8.16	30.05	30.05	30.07	74.7	75.6	74.8	5.18	5.24	5.18	5.23	5.21	5.14	6	5.00
	15:17		Middle	3.0	25.40	25.40		8.15	8.15	8.16	30.08	30.08		30.08	74.5		74.4	74.8		5.16	5.15		5.18	
5/8/2016	14:20	Fine	Middle	2.5	26.40	26.40	26.45	8.14	8.14	8.13	31.02	31.02	31.00	66.2	65.3	65.1	4.47	4.41	4.39	3.38	3.38	3.41	5	5.00
	14:22		Middle	2.5	26.50	26.50		8.12	8.12	8.13	30.97	30.97		30.97	64.7		64.1	65.1		4.37	4.31		4.39	
8/8/2016	15:05	Fine	Middle	2.5	27.50	27.50	27.55	8.15	8.15	8.15	30.51	30.51	30.47	64.9	63.0	64.8	4.29	4.19	4.17	2.98	2.99	2.97	3	3.00
	15:07		Middle	2.5	27.60	27.60		8.15	8.15	8.15	30.42	30.42		30.42	69.9		61.3	64.8		4.12	4.08		4.17	
11/8/2016	3:58	Cloudy	Middle	3.0	26.80	26.80	26.75	7.77	7.77	7.78	31.00	31.00	31.00	72.5	73.9	73.3	4.89	4.98	4.94	1.69	1.83	1.80	3	3.00
	3:59		Middle	3.0	26.70	26.70		7.78	7.78	7.78	30.99	30.99		30.99	73.7		72.9	73.3		4.97	4.91		4.94	
13/8/2016	8:15	Fine	Middle	3.0	26.30	26.30	26.35	8.25	8.25	8.25	30.49	30.49	30.50	83.9	84.2	84.1	5.70	5.71	5.71	3.80	3.57	3.69	3	3.00
	8:17		Middle	3.0	26.40	26.40		8.25	8.25	8.25	30.51	30.51		30.51	84.0		84.2	84.1		5.70	5.71		5.71	
15/8/2016	10:25	Fine	Middle	3.0	26.00	26.00	26.05	8.35	8.35	8.35	30.83	30.83	30.83	86.2	86.6	85.9	5.87	5.90	5.86	1.97	2.00	1.98	3	3.00
	10:27		Middle	3.0	26.10	26.10		8.35	8.35	8.35	30.82	30.82		30.82	85.8		85.1	85.9		5.85	5.80		5.86	
17/8/2016	10:58	Fine	Middle	3.5	26.20	26.20	26.20	8.35	8.35	8.35	31.26	31.26	31.25	70.4	69.2	68.5	4.77	4.69	4.64	5.23	5.17	5.17	9	9.00
	11:00		Middle	3.5	26.20	26.20		8.35	8.35	8.35	31.23	31.26		31.25	67.7		66.7	68.5		4.59	4.52		4.64	
19/8/2016	10:55	Cloudy	Middle	3.0	27.20	27.20	27.25	8.32	8.32	8.32	30.53	30.53	30.53	72.4	72.9	72.8	4.84	4.87	4.87	7.09	7.10	7.11	8	8.50
	10:57		Middle	3.0	27.30	27.30		8.32	8.32	8.32	30.52	30.52		30.52	73.0		72.9	72.8		4.88	4.87		4.87	
22/8/2016	15:10	Fine	Middle	3.0	28.10	28.10	28.15	8.18	8.18	8.18	29.57	29.57	29.57	72.5	73.0	73.0	4.80	4.83	4.83	3.38	3.37	3.36	3	3.00
	15:12		Middle	3.0	28.20	28.20		8.18	8.18	8.18	29.57	29.57		29.57	73.3		73.2	73.0		4.85	4.84		4.83	
24/8/2016	15:55	Fine	Middle	2.5	28.10	28.10	28.15	7.85	7.85	7.85	30.21	30.21	30.21	86.4	87.2	86.2	5.70	5.76	5.69	4.87	4.60	4.66	4	4.00
	15:57		Middle	2.5	28.20	28.20		7.85	7.85	7.85	30.21	30.21		30.21	85.7		85.5	86.2		5.65	5.63		5.69	
26/8/2016	8:18	Fine	Middle	3.5	28.10	28.10	28.10	7.91	7.91	7.86	29.14	29.14	29.14	93.3	93.5	92.0	6.22	6.22	6.12	1.51	1.56	1.57	2	2.00
	8:20		Middle	3.5	28.10	28.10		7.81	7.81	7.86	29.14	29.14		29.14	87.6		93.4	92.0		5.82	6.21		6.12	

Remarks:
Single underline denotes exceedance over Action Level.
Double underline denotes exceedance over Limit Level.



**Water Monitoring Result at P5 - WCT / RT / IT
Mid-Ebb Tide**

Date	Time	Weather Condition	Sampling Depth		Water Temperature		pH			Salinity		DO Saturation		DO		Turbidity		Suspended Solids						
					°C		-		ppt		%		mg/L		NTU		mg/L							
			m	Value	Average	Value	Average	Value	Average	Value	Average	Value	Average	Value	Average	Value	Average	Value	Average					
27/7/2016	17:20	Fine	Middle	2.5	26.90	26.90	26.95	8.44	8.44	8.44	31.07	31.07	31.07	96.1	96.3	95.6	6.45	6.46	6.42	4.89	4.89	4.88	9	8.50
	17:22		Middle	2.5	27.00	27.00		8.44	8.44		31.07	31.07		95.6	94.5		6.41	6.34		4.88	4.87		8	
29/7/2016	10:36	Fine	Middle	2.5	26.80	26.80	26.80	8.45	8.45	8.45	30.13	30.13	30.14	78.7	77.2	77.2	5.31	5.21	5.21	3.59	3.39	3.46	4	4.00
	10:38		Middle	2.5	26.80	26.80		8.45	8.45		30.14	30.14		76.8	76.0		5.18	5.13		3.40	3.44		4	
1/8/2016	10:53	Cloudy	Middle	2.5	26.40	26.40	26.40	8.44	8.44	8.44	30.46	30.46	30.46	76.6	75.1	75.5	5.21	5.10	5.13	3.80	3.78	3.74	3	3.00
	10:55		Middle	2.5	26.40	26.40		8.44	8.44		30.46	30.46		74.4	75.7		5.05	5.14		3.70	3.69		3	
3/8/2016	15:20	Cloudy	Middle	3.0	25.50	25.50	25.50	8.15	8.15	8.15	29.94	29.94	29.94	80.6	81.6	80.8	5.57	5.64	5.59	4.63	4.58	4.59	5	5.00
	15:22		Middle	3.0	25.50	25.50		8.15	8.15		29.93	29.93		80.6	80.5		5.57	5.56		4.58	4.58		5	
5/8/2016	14:24	Fine	Middle	2.5	26.40	26.40	26.45	8.12	8.12	8.12	30.94	30.94	30.95	63.0	61.3	60.0	4.28	4.21	4.08	3.80	3.80	3.63	2	2.50
	14:26		Middle	2.5	26.50	26.50		8.11	8.11		30.95	30.95		57.8	57.9		3.91	3.91		3.45	3.45		3	
8/8/2016	15:09	Fine	Middle	2.5	27.50	27.50	27.50	8.14	8.14	8.17	30.43	30.43	30.43	59.1	58.3	58.3	3.94	3.86	3.88	3.10	3.10	3.10	<2	<2
	15:11		Middle	2.5	27.50	27.50		8.14	8.24		30.43	30.43		58.0	57.7		3.86	3.84		3.10	3.10		<2	
11/8/2016	4:08	Cloudy	Middle	3.0	26.70	26.70	26.70	7.73	7.73	7.72	30.55	30.55	30.55	81.8	80.2	80.9	5.52	5.42	5.46	2.12	2.19	2.17	6	5.00
	4:09		Middle	3.0	26.70	26.70		7.70	7.70		30.55	30.55		80.8	80.6		5.48	5.41		2.21	2.17		4	
13/8/2016	8:20	Fine	Middle	3.0	26.40	26.40	26.45	8.26	8.26	8.26	30.53	30.53	30.53	84.9	87.2	86.2	5.75	5.90	5.82	3.44	3.54	3.56	3	2.50
	8:22		Middle	3.0	26.50	26.50		8.26	8.26		30.53	30.53		87.1	85.5		5.90	5.73		3.67	3.60		2	
15/8/2016	10:30	Fine	Middle	3.0	25.90	25.90	25.95	8.35	8.35	8.35	30.86	30.86	30.86	85.3	85.3	85.2	5.82	5.82	5.81	1.87	1.93	1.90	3	3.00
	10:32		Middle	3.0	26.00	26.00		8.35	8.35		30.85	30.85		85.6	84.4		5.81	5.78		1.90	1.88		3	
17/8/2016	11:03	Fine	Middle	38.5	26.20	26.20	26.26	8.35	8.35	8.35	31.21	31.21	31.21	75.4	75.5	75.3	5.11	5.12	5.10	6.84	6.81	6.83	8	7.50
	11:04		Middle	3.5	26.33	26.30		8.34	8.34		31.20	31.20		75.5	74.6		5.11	5.05		6.81	6.84		7	
19/8/2016	11:00	Cloudy	Middle	3.0	27.40	27.40	27.40	8.30	8.30	8.30	30.48	30.48	30.48	76.5	76.9	76.6	5.11	5.13	5.12	7.06	7.00	6.92	15	14.50
	11:02		Middle	3.0	27.40	27.40		8.29	8.29		30.48	30.48		76.5	76.5		5.11	5.11		6.83	6.80		14	
22/8/2016	15:15	Fine	Middle	3.0	28.20	28.20	28.30	8.17	8.17	8.17	29.64	29.64	29.64	72.1	72.9	72.4	4.76	4.81	4.78	3.38	3.37	3.38	6	5.50
	15:17		Middle	3.0	28.40	28.40		8.16	8.16		29.63	29.63		72.3	72.2		4.77	4.76		3.38	3.37		5	
24/8/2016	16:00	Fine	Middle	2.5	28.30	28.30	28.35	7.86	7.86	7.86	30.23	30.23	30.23	90.7	91.8	91.6	5.97	6.04	6.03	4.25	4.29	4.32	4	4.00
	16:02		Middle	2.5	28.40	28.40		7.86	7.86		30.23	30.23		92.5	91.5		6.09	6.02		4.35	4.38		4	
26/8/2016	8:22	Fine	Middle	3.5	28.10	28.10	28.10	7.92	7.92	7.92	29.15	29.15	29.15	91.3	90.9	91.1	6.07	6.04	6.06	1.37	1.39	1.40	<2	<2
	8:24		Middle	3.5	28.10	28.10		7.92	7.92		29.15	29.15		90.1	92.1		5.99	6.12		1.41	1.44		<2	

Remarks:
Single underline denotes exceedance over Action Level.
Double underline denotes exceedance over Limit Level.



**Water Monitoring Result at RW21-P789 - Sun Hung Kai Centre
Mid-Ebb Tide**

Date	Time	Weather Condition	Sampling Depth		Water Temperature		pH			Salinity		DO Saturation		DO		Turbidity		Suspended Solids						
					°C		-		ppt		%		mg/L		NTU		mg/L							
					Value	Average	Value	Average	Value	Average	Value	Average	Value	Average	Value	Average	Value	Average	Value	Average				
27/7/2016	17:45	Fine	Middle	4.0	26.60	26.60	26.80	8.31	8.31	8.30	31.77	31.77	31.76	84.2	83.9	84.0	5.63	5.61	5.62	4.13	4.07	4.08	8	7.50
	17:47		Middle	4.0	27.00	27.00		8.29	8.29		31.75	31.75		83.6	84.2		5.59	5.63		4.05	4.06		7	
29/7/2016	10:55	Fine	Middle	3.5	26.90	26.90	26.90	8.38	8.38	8.39	30.34	30.34	30.37	68.8	68.4	68.7	4.63	4.61	4.62	6.11	6.09	6.02	8	8.00
	10:57		Middle	3.5	26.90	26.90		8.40	8.40		30.39	30.39		68.7	68.8		4.62	4.63		6.05	5.84		8	
1/8/2016	11:05	Cloudy	Middle	3.5	26.10	26.10	26.15	8.36	8.36	8.36	31.12	31.12	31.18	83.6	83.4	82.8	5.68	5.66	5.62	3.33	3.35	3.33	3	3.00
	11:07		Middle	3.5	26.20	26.20		8.35	8.35		31.24	31.24		82.3	81.7		5.58	5.54		3.35	3.30		3	
3/8/2016	11:30	Cloudy	Middle	4.0	25.60	25.60	25.65	8.20	8.20	8.19	31.71	31.71	31.70	67.7	68.4	68.2	4.62	4.67	4.65	5.00	5.02	5.02	6	5.50
	11:32		Middle	4.0	25.70	25.70		8.17	8.17		31.69	31.69		68.0	68.5		4.64	4.67		5.02	5.02		5	
5/8/2016	14:40	Fine	Middle	3.5	26.10	26.10	26.20	8.10	8.10	8.10	31.22	31.22	31.18	56.5	56.3	55.2	3.83	3.82	3.77	4.25	4.24	4.23	4	3.00
	14:42		Middle	3.5	26.30	26.30		8.10	8.10		31.13	31.13		53.1	54.7		3.73	3.70		4.23	4.20		2	
8/8/2016	15:23	Fine	Middle	3.5	27.50	27.50	27.60	8.11	8.11	8.11	30.97	30.97	30.93	61.8	60.9	60.8	4.11	4.04	4.04	4.25	4.25	4.24	<2	2.00
	15:25		Middle	3.5	27.70	27.70		8.11	8.11		30.88	30.88		59.9	60.4		3.98	4.01		4.17	4.28		2	
11/8/2016	5:00	Cloudy	Middle	3.5	26.40	26.40	26.40	7.75	7.75	7.76	30.65	30.65	30.65	68.0	68.1	68.2	4.60	4.61	4.62	2.60	2.58	2.56	5	5.50
	5:01		Middle	3.5	26.40	26.40		7.76	7.76		30.65	30.65		68.4	68.3		4.63	4.63		2.56	2.51		6	
13/8/2016	8:45	Fine	Middle	3.5	26.30	26.30	26.40	8.20	8.20	8.18	30.69	30.69	30.69	70.8	70.5	70.7	4.86	4.78	4.80	3.29	3.24	3.22	5	4.50
	8:47		Middle	3.5	26.50	26.50		8.16	8.16		30.68	30.68		70.6	70.7		4.78	4.79		3.18	3.15		4	
15/8/2016	10:58	Fine	Middle	3.5	26.00	26.00	26.05	8.30	8.30	8.30	31.27	31.27	31.28	80.7	80.5	80.3	5.48	5.46	5.45	1.92	1.94	1.95	4	3.50
	11:00		Middle	3.5	26.10	26.10		8.29	8.29		31.29	31.29		80.0	80.1		5.43	5.44		1.97	1.95		3	
17/8/2016	11:05	Fine	Middle	3.5	26.10	26.10	26.10	8.36	8.36	8.37	31.17	31.17	31.17	76.5	76.9	76.6	5.20	5.22	5.18	2.77	2.74	2.74	7	7.00
	11:07		Middle	3.5	26.10	26.10		8.37	8.37		31.17	31.17		76.5	76.4		5.20	5.10		2.73	2.73		7	
19/8/2016	11:15	Cloudy	Middle	4.0	27.30	27.30	27.40	8.29	8.29	8.29	30.37	30.37	30.37	71.6	71.8	71.3	4.78	4.79	4.76	3.68	3.70	3.68	5	4.50
	11:17		Middle	4.0	27.50	27.50		8.29	8.29		30.36	30.36		71.3	70.5		4.76	4.71		3.69	3.66		4	
22/8/2016	15:35	Fine	Middle	3.5	28.20	28.20	28.25	8.16	8.16	8.15	29.88	29.88	29.88	66.7	67.0	66.5	4.42	4.44	4.40	5.11	5.11	5.11	6	6.00
	15:37		Middle	3.5	28.30	28.30		8.12	8.17		29.87	29.87		65.6	66.6		4.32	4.42		5.12	5.11		6	
24/8/2016	16:15	Fine	Middle	3.5	28.40	28.40	28.50	7.83	7.83	7.83	30.18	30.18	30.18	82.9	83.3	83.2	5.45	5.47	5.47	2.20	2.21	2.23	6	5.50
	16:17		Middle	3.5	28.60	28.60		7.83	7.83		30.18	30.18		83.5	83.2		5.48	5.46		2.25	2.27		5	
26/8/2016	8:43	Fine	Middle	3.5	28.20	28.20	28.25	7.88	7.88	7.88	29.45	29.45	29.45	84.6	83.5	83.2	5.60	5.52	5.51	2.59	2.33	2.38	4	4.00
	8:44		Middle	3.5	28.30	28.30		7.88	7.88		29.44	29.44		82.6	82.1		5.48	5.43		2.31	2.30		4	

Remarks:
Single underline denotes exceedance over Action Level.
Double underline denotes exceedance over Limit Level.



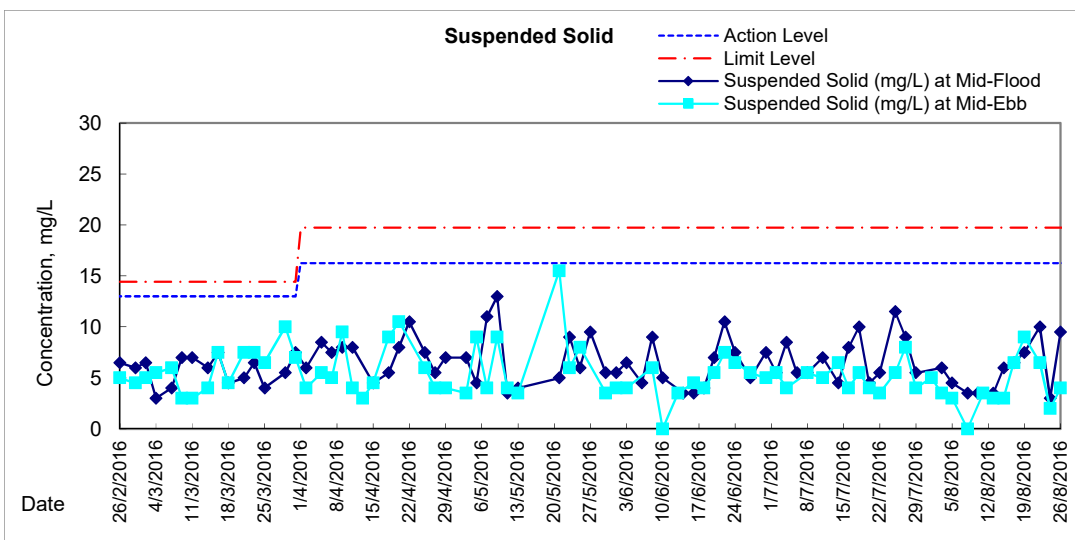
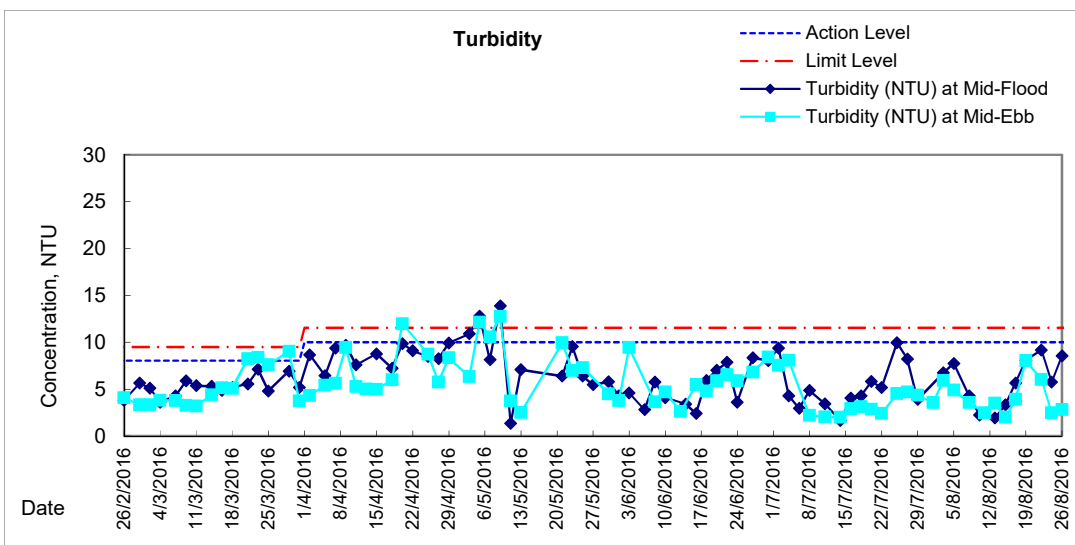
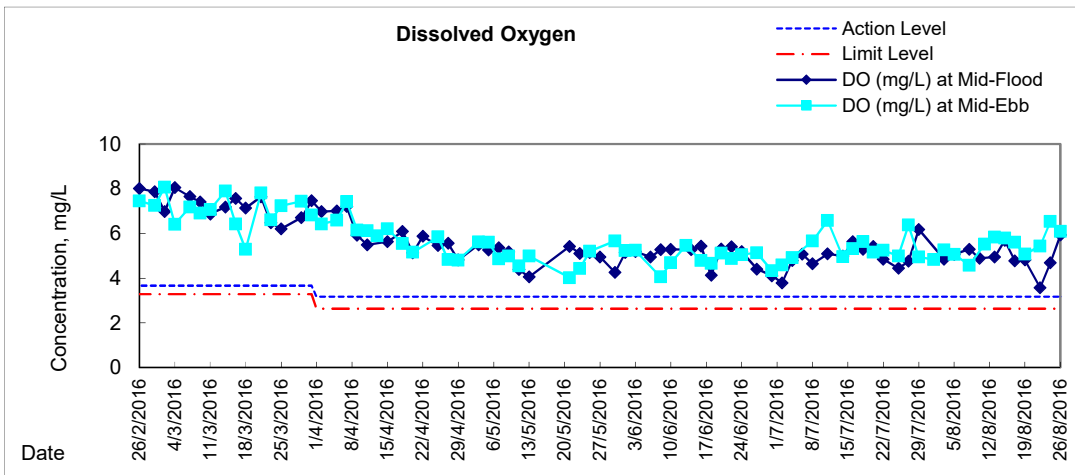
**Water Monitoring Result at WSD19 - Sheung Wan
Mid-Ebb Tide**

Date	Time	Weather Condition	Sampling Depth		Water Temperature		pH			Salinity		DO Saturation		DO		Turbidity		Suspended Solids						
					°C		-		ppt		%		mg/L		NTU		mg/L							
			m	Value	Average	Value	Average	Value	Average	Value	Average	Value	Average	Value	Average	Value	Average	Value	Average					
27/7/2016	16:36	Fine	Middle	3.5	27.70	27.70	27.80	8.26	8.26	8.30	30.91	30.91	30.91	98.4	95.4	96.5	6.51	6.31	6.38	4.75	4.27	4.69	8	8.00
	16:38		Middle	3.5	27.90	27.90		8.33	8.33		30.91	30.91		96.2	96.0		6.36	6.34		4.85	4.87		8	
29/7/2016	8:19	Fine	Middle	3.5	26.80	26.80	26.80	8.35	8.35	8.36	30.00	30.00	29.99	73.5	73.4	73.1	4.97	4.96	4.94	4.20	4.41	4.34	4	4.00
	8:21		Middle	3.5	26.80	26.80		8.36	8.36		29.98	29.98		73.1	72.3		4.94	4.89		4.41	4.34		4	
1/8/2016	9:58	Cloudy	Middle	3.5	27.40	27.40	27.45	8.36	8.36	8.36	30.58	30.58	30.48	73.4	72.5	72.4	4.90	4.83	4.83	3.60	3.59	3.59	5	5.00
	10:00		Middle	3.5	27.50	27.50		8.35	8.35		30.37	30.37		71.8	71.9		4.79	4.80		3.58	3.57		5	
3/8/2016	13:55	Cloudy	Middle	3.5	25.50	25.50	25.60	8.14	8.14	8.14	29.13	29.13	29.13	75.7	76.3	76.0	5.24	5.29	5.26	6.00	5.99	5.94	4	3.50
	13:57		Middle	3.5	25.70	25.70		8.13	8.13		29.12	29.12		75.9	75.9		5.25	5.25		5.92	5.85		3	
5/8/2016	11:05	Fine	Middle	4.0	26.00	26.00	26.15	8.14	8.14	8.13	30.87	30.87	30.88	75.0	75.1	74.5	5.10	5.10	5.06	4.92	4.90	4.91	3	3.00
	11:07		Middle	4.0	26.30	26.30		8.11	8.11		30.88	30.88		74.2	73.8		5.04	5.01		4.90	4.90		3	
8/8/2016	14:14	Fine	Middle	3.5	28.40	28.40	28.45	8.20	8.19	8.18	30.75	30.75	30.70	71.4	70.0	69.9	4.68	4.58	4.58	3.46	3.54	3.56	<2	<2
	14:16		Middle	3.5	28.50	28.50		8.16	8.16		30.65	30.65		69.4	68.9		4.55	4.50		3.54	3.68		<2	
11/8/2016	6:15	Cloudy	Middle	3.5	26.50	26.50	26.50	7.61	7.61	7.61	30.25	30.25	30.26	80.7	82.4	81.4	5.47	5.58	5.52	2.50	2.45	2.48	3	3.50
	6:16		Middle	3.5	26.50	26.50		7.61	7.61		30.27	30.27		81.0	81.5		5.49	5.52		2.47	2.49		4	
13/8/2016	7:30	Fine	Middle	3.5	26.20	26.20	26.30	8.20	8.20	8.18	30.26	30.26	30.26	86.4	86.3	85.8	5.88	5.87	5.83	3.44	3.54	3.52	3	3.00
	7:32		Middle	3.5	26.40	26.40		8.16	8.16		30.26	30.26		85.8	84.6		5.81	5.75		3.56	3.53		3	
15/8/2016	9:47	Fine	Middle	3.5	26.30	26.30	26.40	8.26	8.26	8.28	30.35	30.35	30.37	86.1	86.2	85.4	5.84	5.85	5.80	2.05	1.98	1.99	2	3.00
	9:49		Middle	3.5	26.50	26.50		8.30	8.30		30.38	30.38		85.0	84.3		5.77	5.72		1.98	1.94		4	
17/8/2016	10:00	Fine	Middle	3.5	25.80	25.80	25.90	8.25	8.23	8.22	30.85	30.85	31.10	82.9	82.4	82.4	5.56	5.63	5.60	3.85	3.88	3.91	6	6.50
	10:02		Middle	3.5	26.00	26.00		8.20	8.20		31.84	30.84		82.1	82.0		5.60	5.60		3.95	3.95		7	
19/8/2016	10:00	Cloudy	Middle	4.0	26.80	26.80	26.90	8.15	8.15	8.15	30.28	30.28	30.28	75.4	75.4	75.4	5.07	5.07	5.07	8.05	8.11	8.03	10	9.00
	10:02		Middle	4.0	27.00	27.00		8.15	8.15		30.28	30.28		75.5	75.2		5.08	5.05		8.00	7.95		8	
22/8/2016	14:00	Fine	Middle	4.0	27.20	27.20	27.55	8.14	8.14	8.15	29.72	29.72	29.72	81.9	81.8	81.7	5.45	5.44	5.43	6.06	6.05	6.03	6	6.50
	14:02		Middle	4.0	27.90	27.90		8.15	8.15		29.71	29.71		81.7	81.4		5.43	5.41		6.02	6.00		7	
24/8/2016	15:00	Fine	Middle	3.5	28.90	28.90	29.00	7.81	7.81	7.82	29.58	29.58	29.58	101.4	101.3	100.1	6.62	6.61	6.53	2.48	2.49	2.49	2	2.00
	15:02		Middle	3.5	29.10	29.10		7.83	7.81		29.58	29.59		99.3	98.4		6.48	6.42		2.49	2.49		<2	
26/8/2016	6:45	Fine	Middle	3.5	28.00	28.00	28.05	7.22	7.72	7.64	29.03	29.03	29.03	93.1	91.8	91.5	6.20	6.11	6.09	2.83	2.83	2.83	4	4.00
	6:47		Middle	3.5	28.10	28.10		7.80	7.80		29.03	29.03		90.6	90.3		6.03	6.01		2.82	2.83		4	

Remarks:
Single underline denotes exceedance over Action Level.
Double underline denotes exceedance over Limit Level.

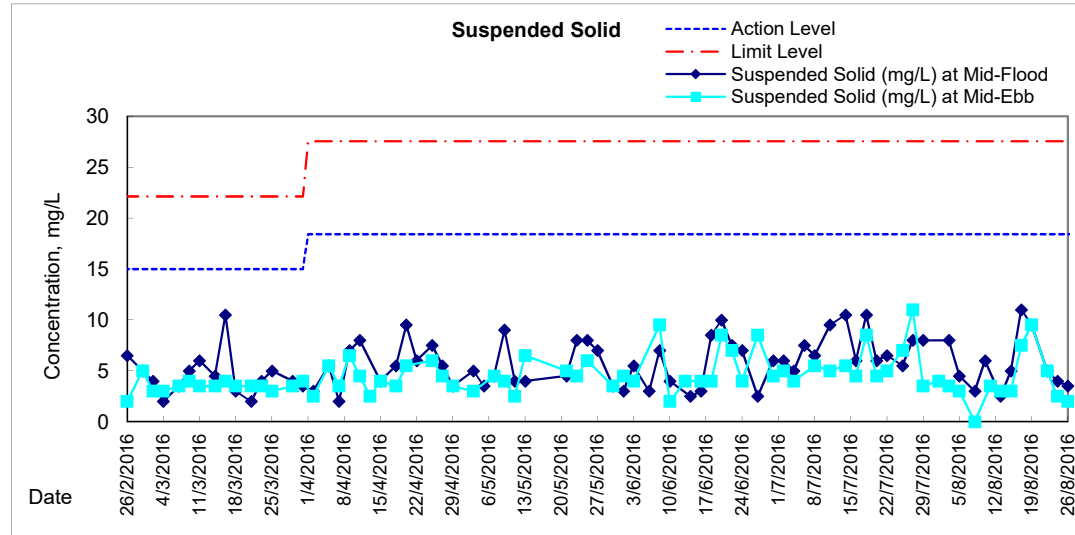
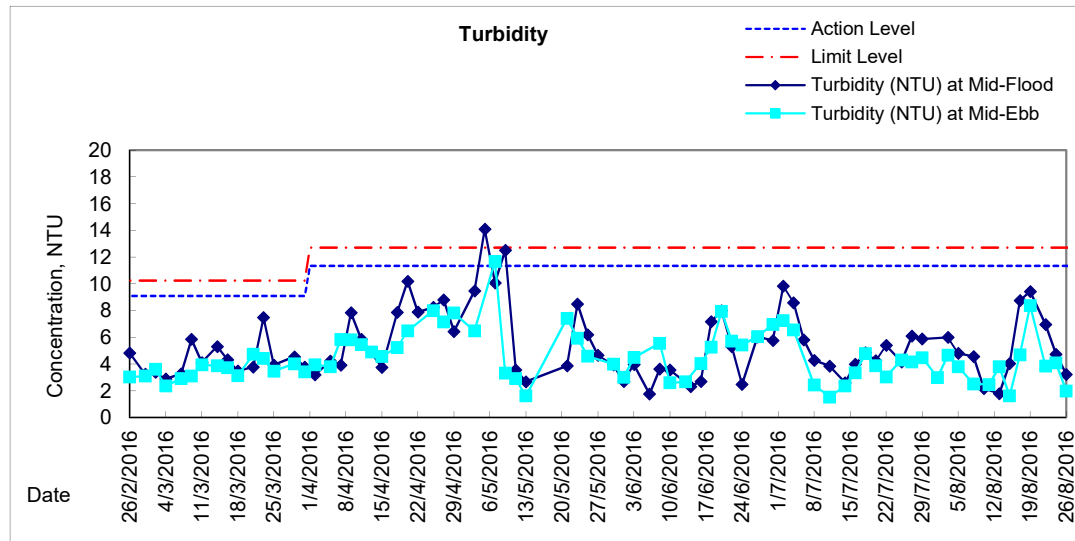
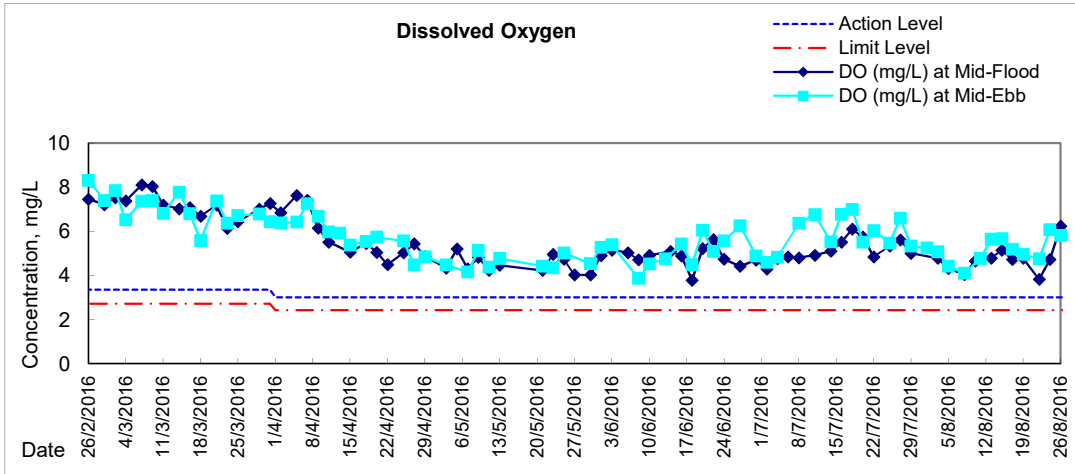


Graphic Presentation of Water Quality Result of WSD19 - Sheung Wan



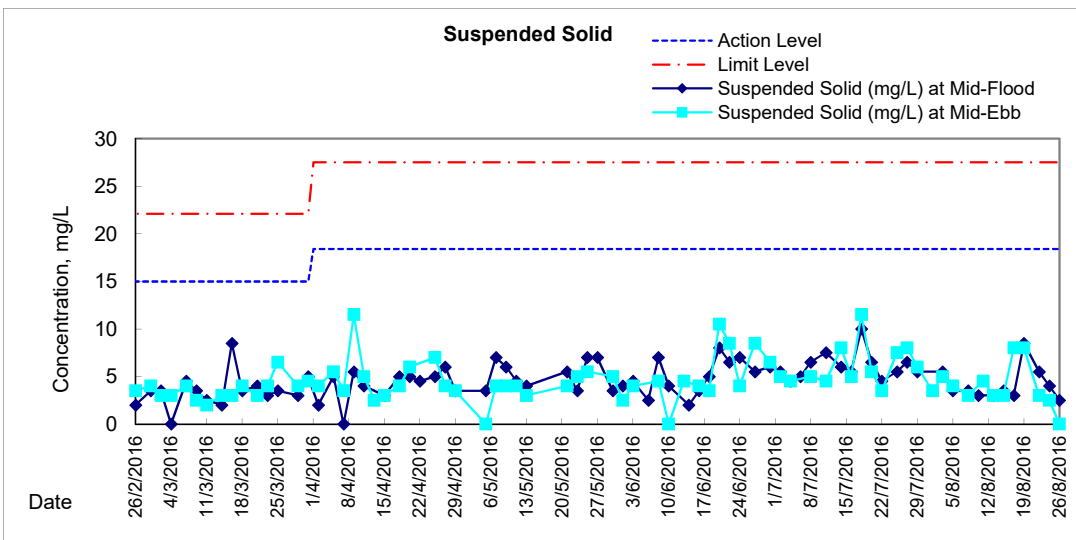
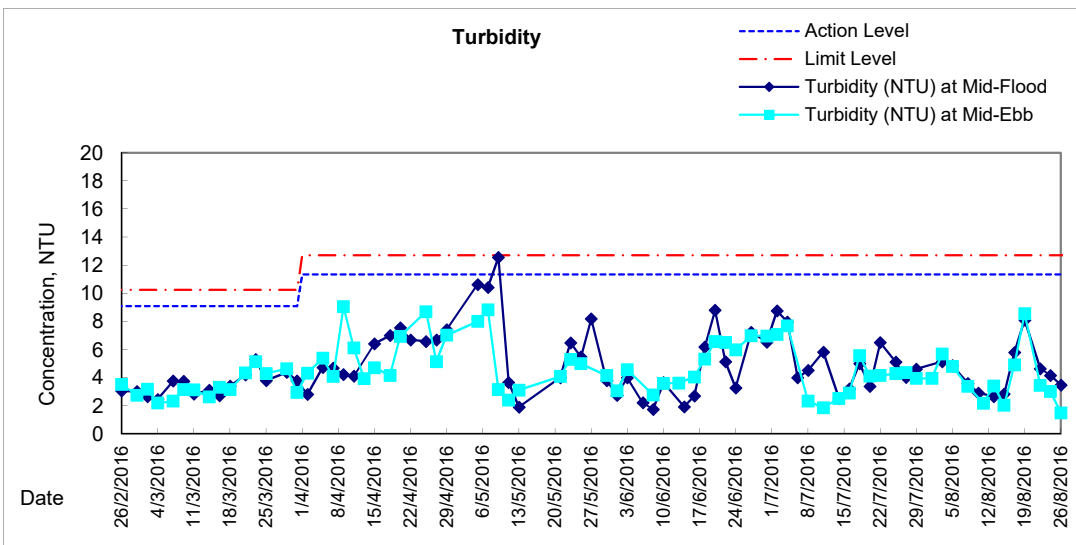
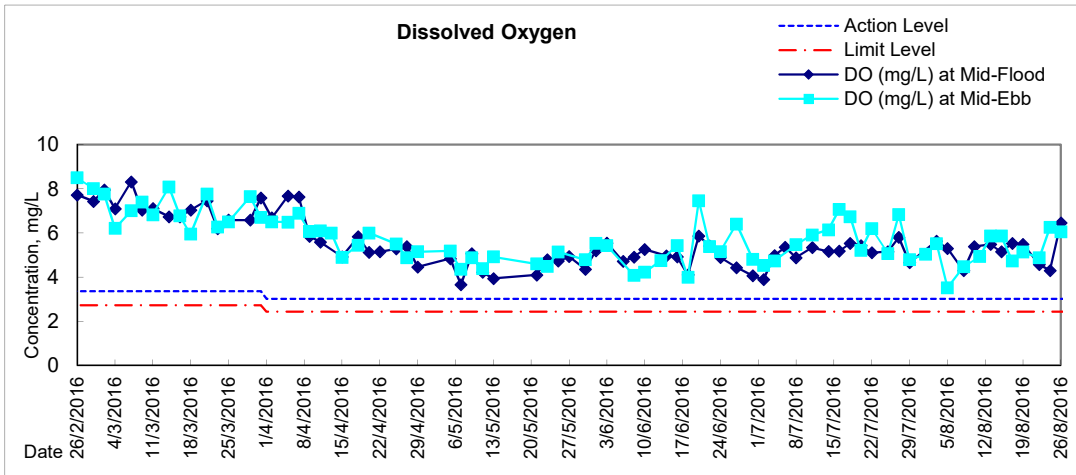


Graphic Presentation of Water Quality Result of C1 - HKCEC



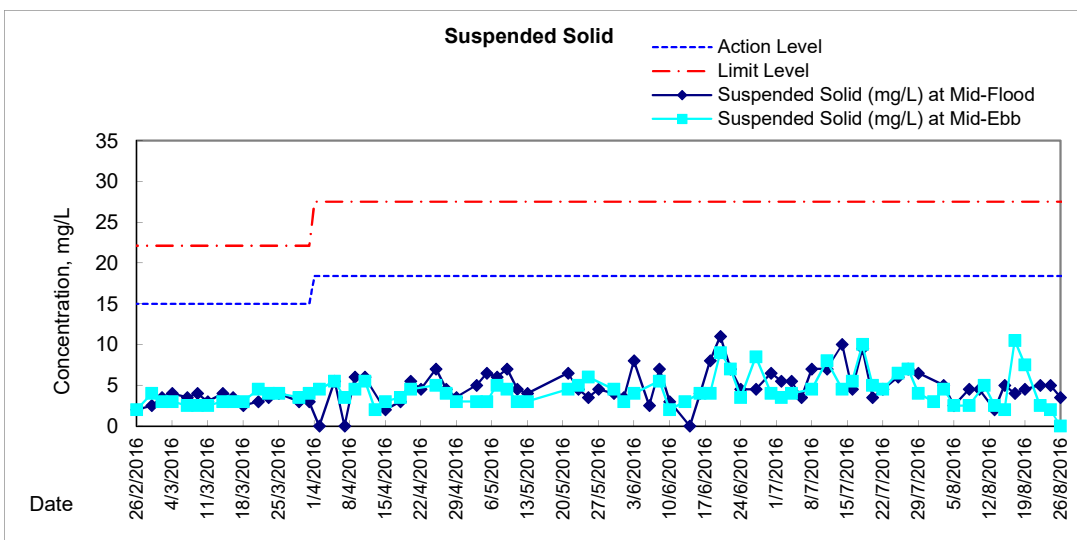
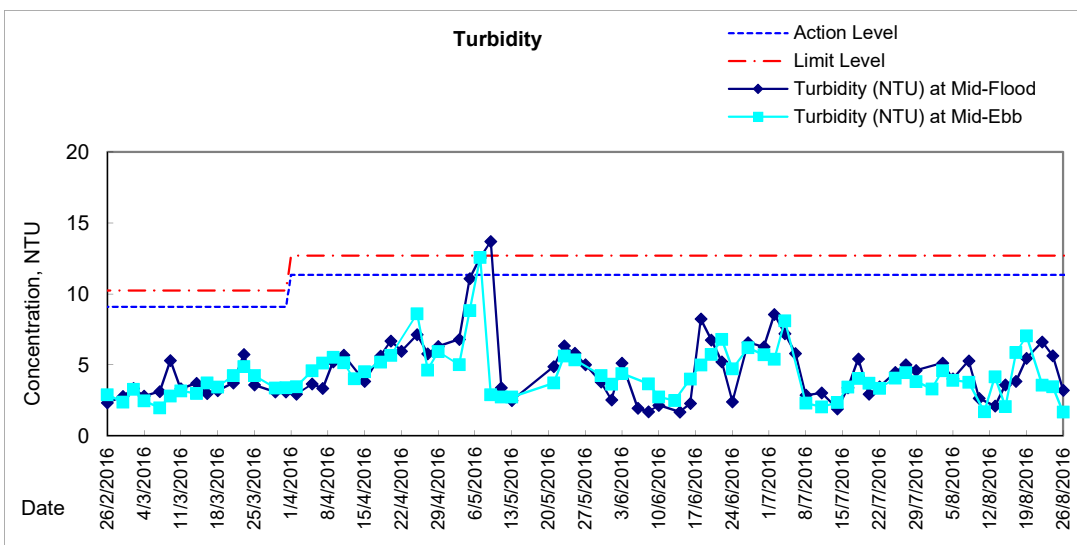
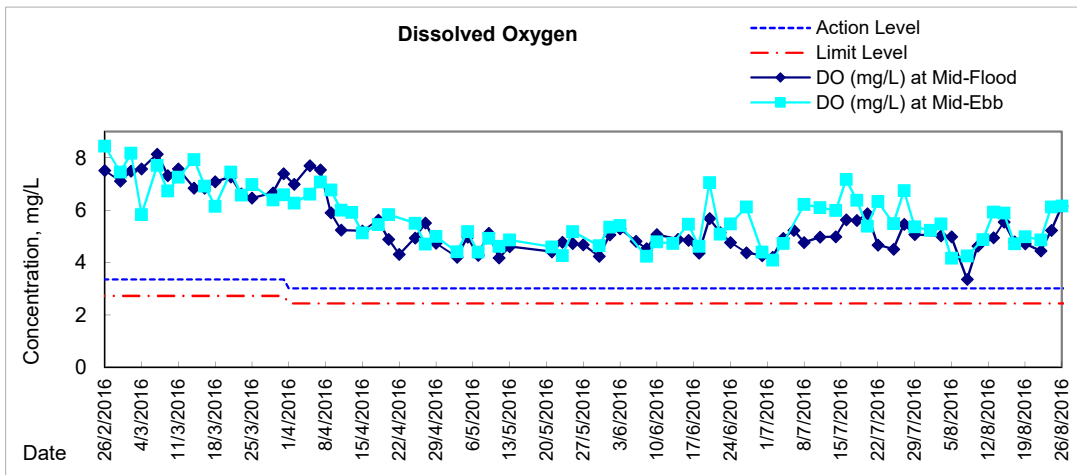


Graphic Presentation of Water Quality Result of P1 - HKCEC Phase I



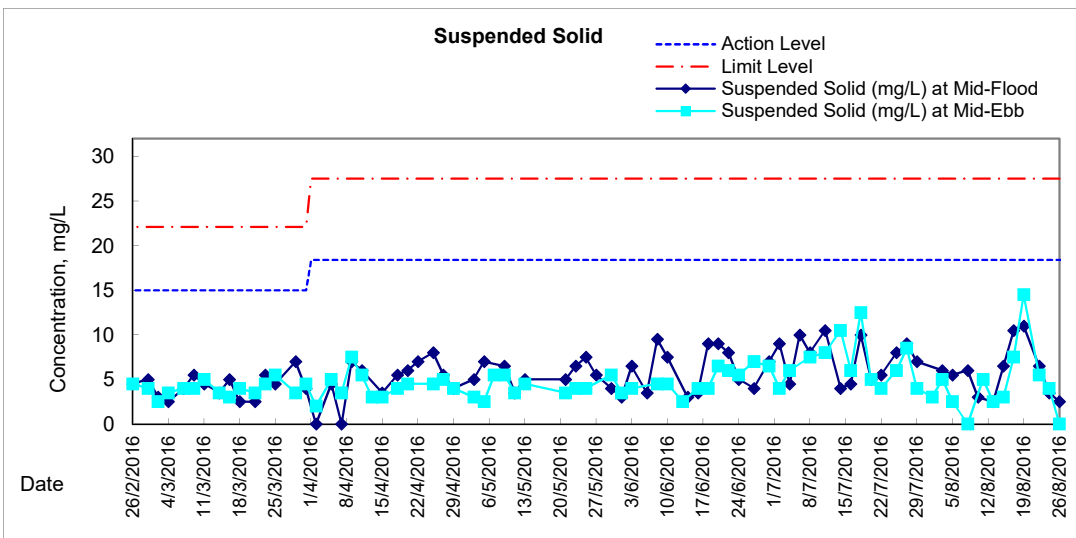
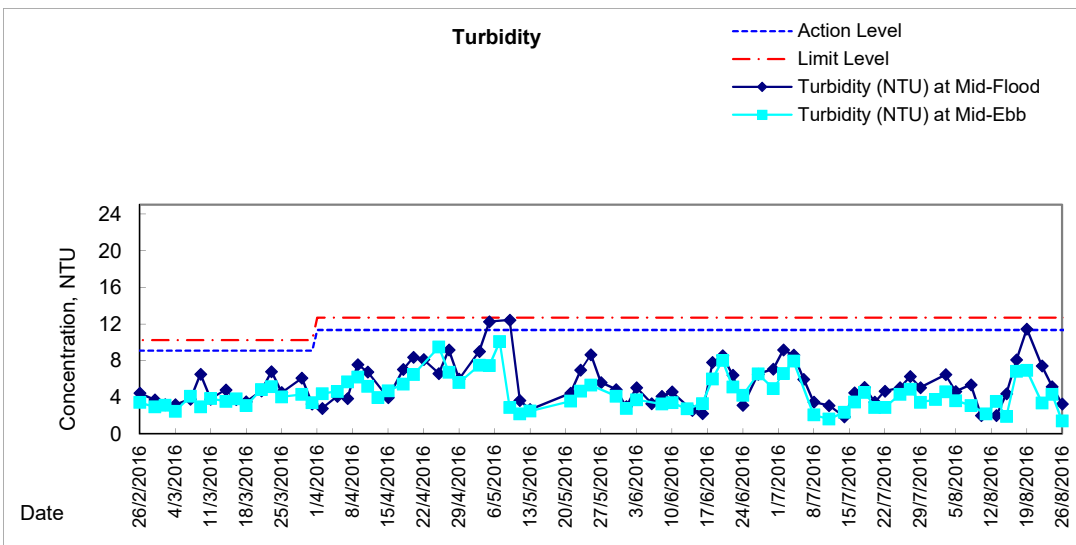
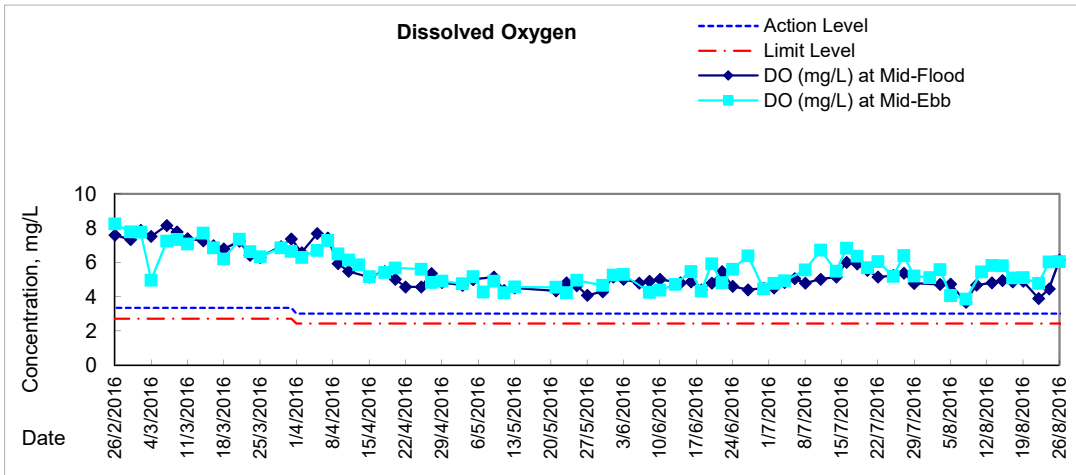


Graphic Presentation of Water Quality Result of P3 - APA



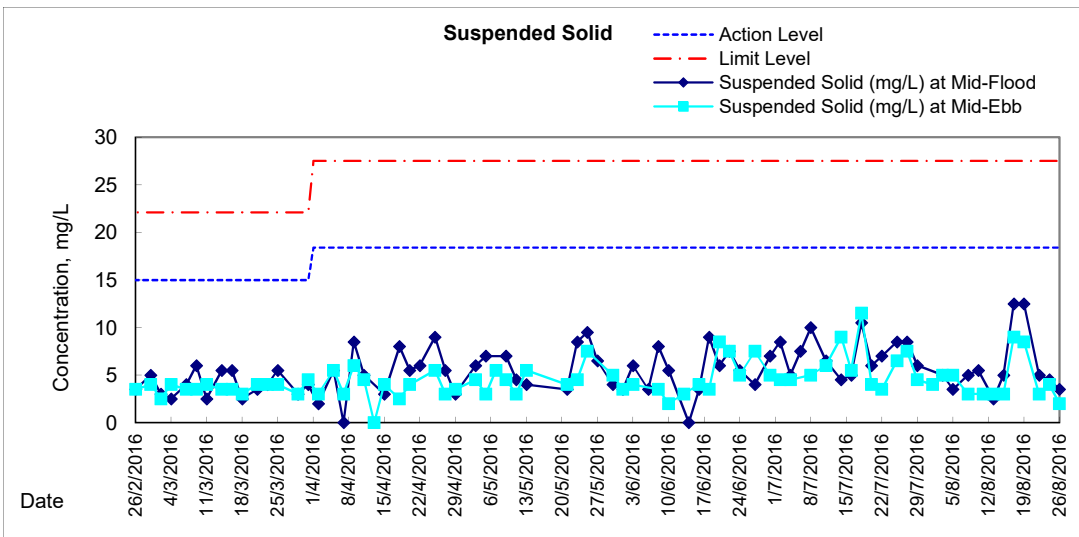
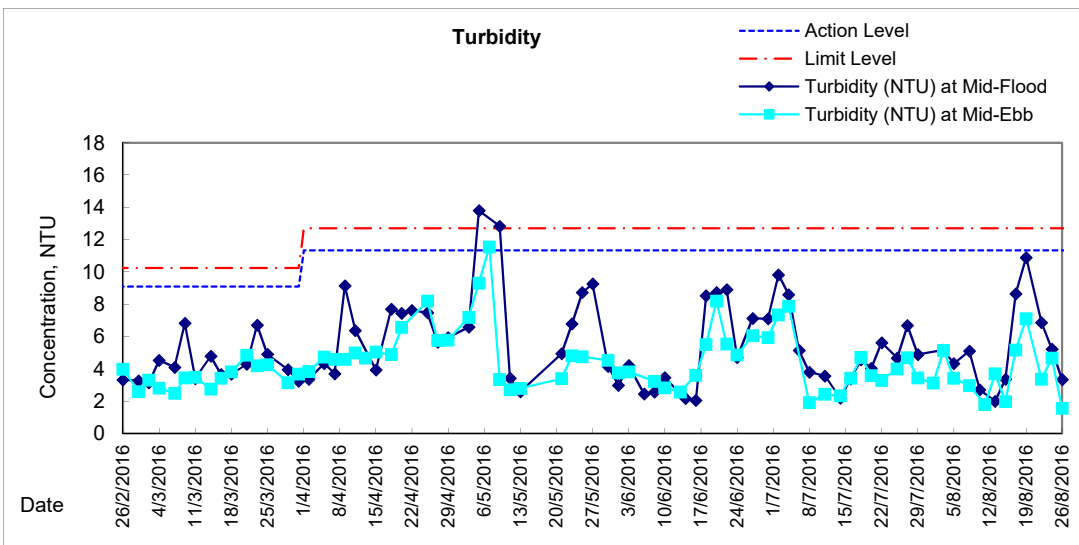
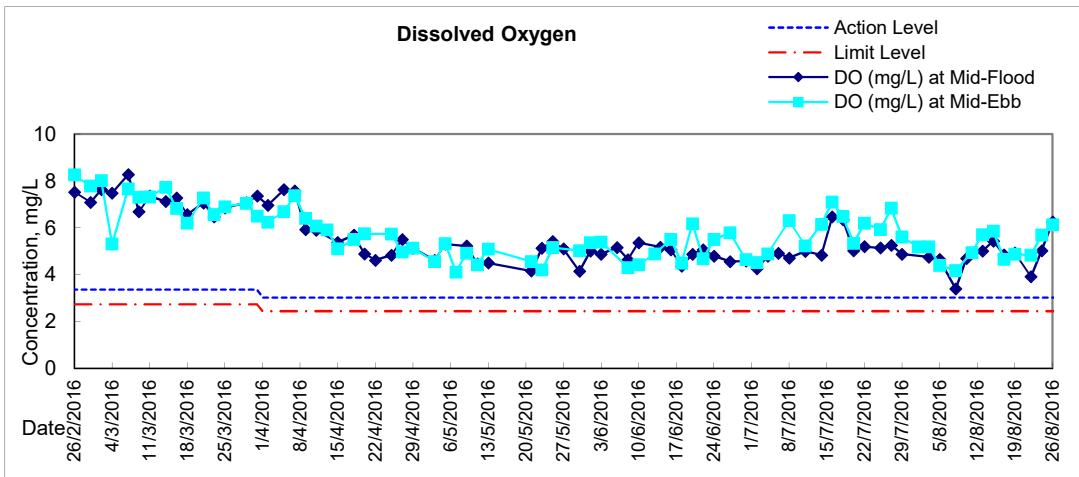


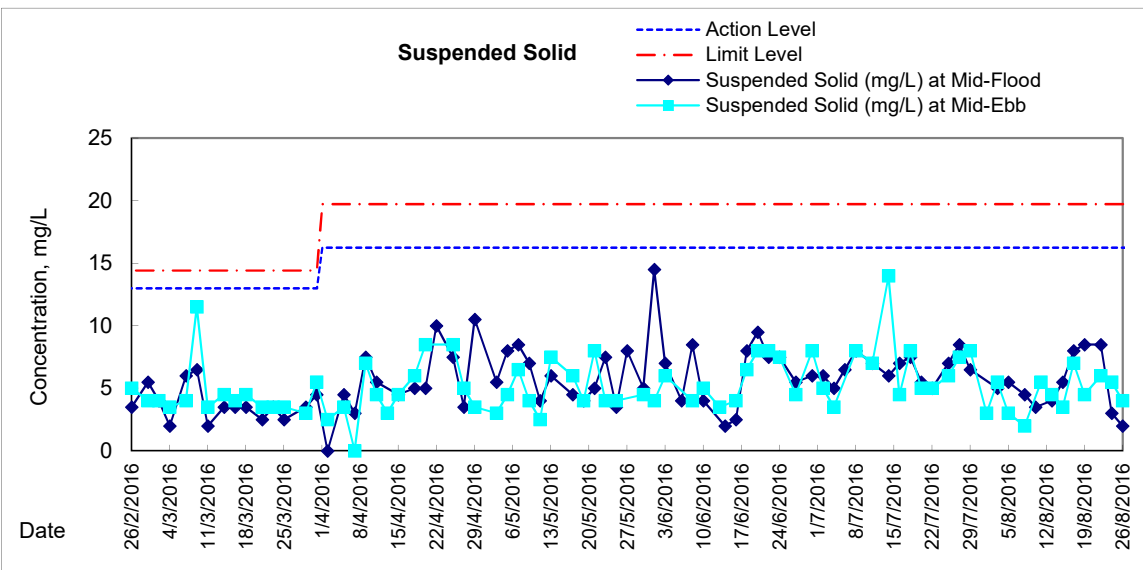
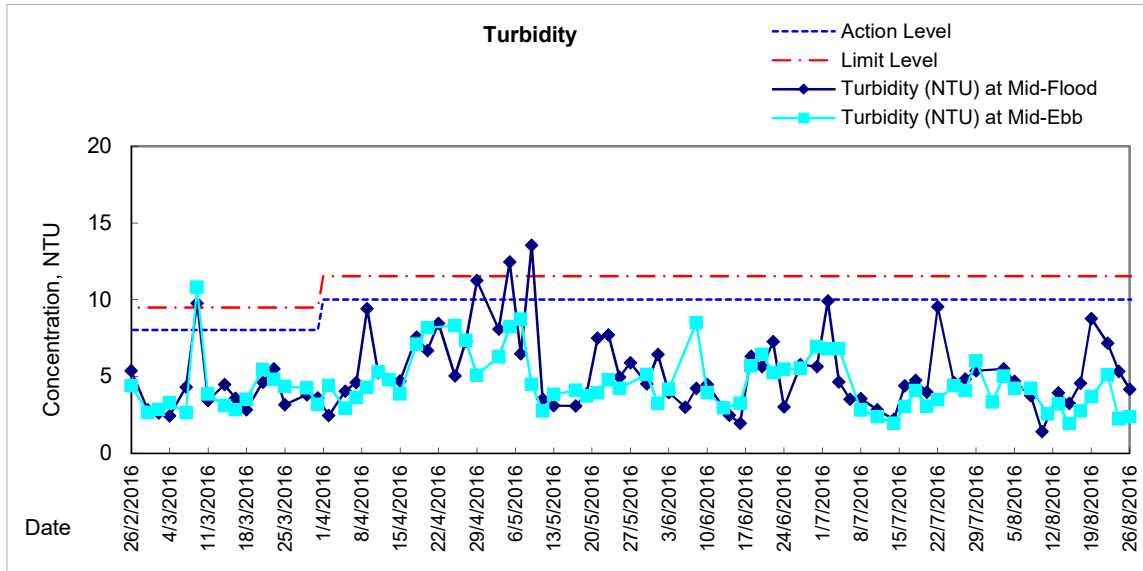
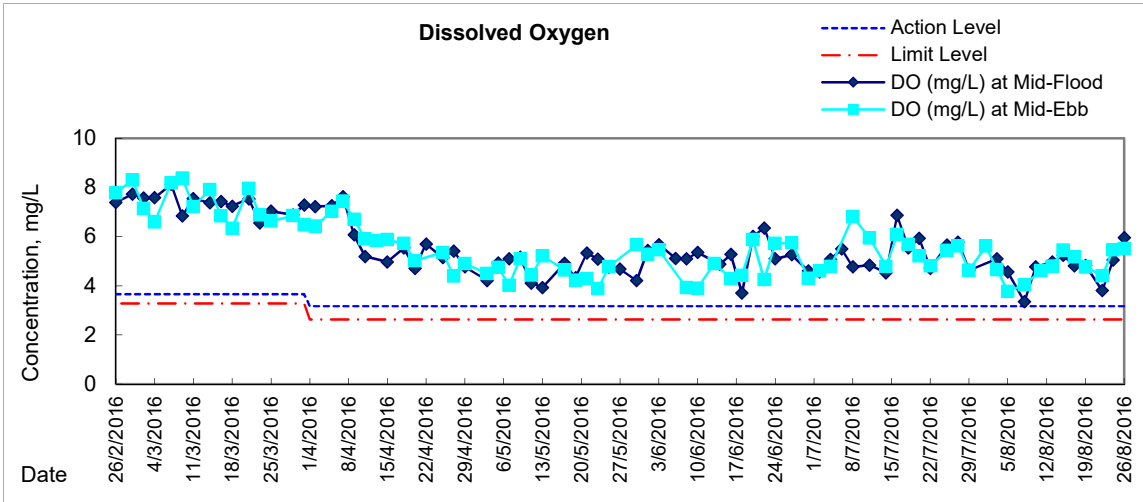
Graphic Presentation of Water Quality Result of P5 - WCT / RT / IT



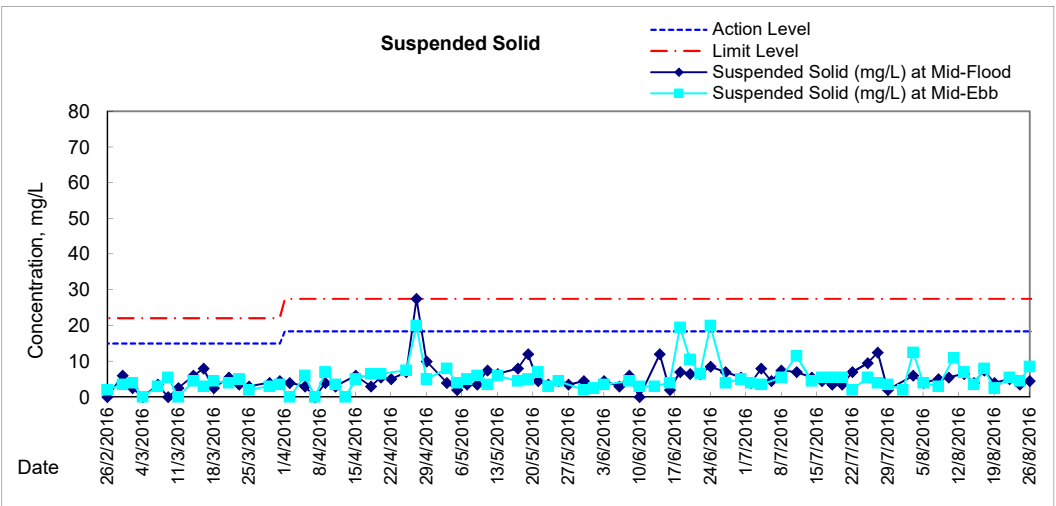
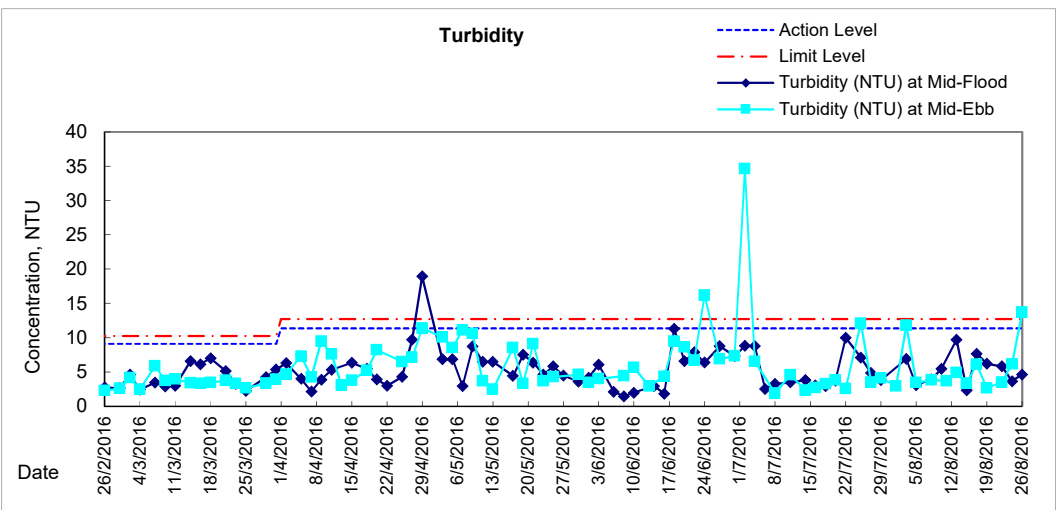
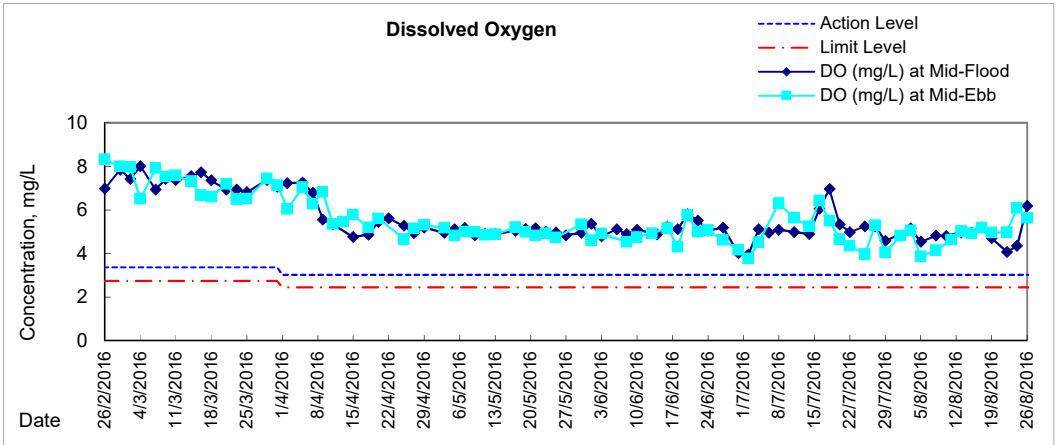


Graphic Presentation of Water Quality Result of P4 - SOC





Graphic Presentation of Water Quality Result of C7 - Windsor House





**Water Monitoring Result at C6 - Excelsior Hotel
Mid-Flood Tide**

Date	Time	Weather Condition	Sampling Depth		Water Temperature			pH		Salinity		DO Saturation		DO					
					°C			-		ppt		%		mg/L					
			m	Value	Average	Value	Average	Value	Average	Value	Average	Value	Average						
27/7/2016	-	Fine	Surface	-	-	-	-	-	-	-	-	-	-	-	-	-	-	-	
	15:15		Middle	1.0	27.60	27.60	27.6	8.14	8.14	8.1	28.97	28.97	29.0	77.4	77.6	77.5	5.19	5.20	5.20
	-		Bottom	-	-	-	-	-	-	-	-	-	-	-	-	-	-	-	-
29/7/2016	16:48	Fine	Surface	1.0	28.30	28.30	28.3	8.13	8.13	8.1	29.02	29.02	29.0	65.8	64.4	65.1	4.35	4.25	4.30
	-		Middle	2.0	-	-	-	-	-	-	-	-	-	-	-	-	-	-	-
	16:50		Bottom	3.0	27.50	27.50	27.5	8.15	8.15	8.2	30.19	30.19	30.2	73.4	71.8	72.6	4.89	4.78	4.84
1/8/2016	-	Strong Wind Warning Signal No. 3	Surface	-	-	-	-	-	-	-	-	-	-	-	-	-	-	-	
	-		Middle	0.0	-	-	-	-	-	-	-	-	-	-	-	-	-	-	
	-		Bottom	-	-	-	-	-	-	-	-	-	-	-	-	-	-	-	
3/8/2016	-	Cloudy	Surface	-	-	-	-	-	-	-	-	-	-	-	-	-	-	-	
	17:45		Middle	1.0	26.00	26.00	26.0	7.86	7.86	7.9	28.17	28.17	28.2	64.8	65.3	65.1	4.49	4.52	4.51
	-		Bottom	-	-	-	-	-	-	-	-	-	-	-	-	-	-	-	
5/8/2016	-	Fine	Surface	-	-	-	-	-	-	-	-	-	-	-	-	-	-	-	
	20:25		Middle	1.5	25.90	25.90	25.9	7.63	7.63	7.6	29.28	29.28	29.3	57.7	57.2	57.5	3.96	3.93	3.95
	-		Bottom	-	-	-	-	-	-	-	-	-	-	-	-	-	-	-	
8/8/2016	11:01	Fine	Surface	1.0	27.60	27.60	27.6	8.03	8.03	8.0	30.06	30.06	30.1	58.2	58.7	58.5	3.88	3.90	3.89
	-		Middle	2.0	-	-	-	-	-	-	-	-	-	-	-	-	-	-	
	11:03		Bottom	3.0	27.50	27.50	27.5	7.99	7.99	8.0	30.31	30.31	30.3	78.5	79.1	78.8	5.23	5.27	5.25
11/8/2016	-	Cloudy	Surface	-	-	-	-	-	-	-	-	-	-	-	-	-	-	-	
	1:25		Middle	1.5	26.20	26.20	26.2	7.72	7.72	7.7	26.89	26.89	26.9	50.5	50.9	50.7	3.51	3.53	3.52
	-		Bottom	-	-	-	-	-	-	-	-	-	-	-	-	-	-	-	
13/8/2016	-	Cloudy	Surface	-	-	-	-	-	-	-	-	-	-	-	-	-	-	-	
	0:25		Middle	1.5	26.70	26.80	26.8	7.59	7.59	7.6	24.35	24.35	24.4	50.7	51.3	51.0	3.54	3.57	3.56
	-		Bottom	-	-	-	-	-	-	-	-	-	-	-	-	-	-	-	
15/8/2016	-	Cloudy	Surface	-	-	-	-	-	-	-	-	-	-	-	-	-	-	-	
	14:55		Middle	1.5	26.30	26.30	26.3	8.15	8.15	8.2	29.09	29.09	29.1	62.1	62.9	62.5	4.25	4.30	4.28
	-		Bottom	-	-	-	-	-	-	-	-	-	-	-	-	-	-	-	
17/8/2016	-	Cloudy	Surface	-	-	-	-	-	-	-	-	-	-	-	-	-	-	-	
	17:00		Middle	1.0	26.50	26.50	26.5	7.73	7.73	7.7	24.97	24.97	25.0	59.5	59.7	59.6	4.16	4.17	4.17
	-		Bottom	-	-	-	-	-	-	-	-	-	-	-	-	-	-	-	
19/8/2016	-	Cloudy	Surface	-	-	-	-	-	-	-	-	-	-	-	-	-	-	-	
	18:11		Middle	1.0	27.50	27.50	27.5	7.50	7.50	7.5	26.89	26.89	26.9	53.4	53.4	53.4	3.63	3.63	3.63
	-		Bottom	-	-	-	-	-	-	-	-	-	-	-	-	-	-	-	
22/8/2016	11:47	Fine	Surface	1.0	27.80	27.80	27.8	8.13	8.13	8.1	28.50	28.50	28.5	48.9	48.1	48.5	3.28	3.22	3.25
	-		Middle	2.0	-	-	-	-	-	-	-	-	-	-	-	-	-	-	
	11:49		Bottom	3.0	27.80	27.80	27.8	8.11	8.11	8.1	29.18	29.18	29.2	60.3	62.7	61.5	4.02	4.18	4.10
24/8/2016	11:56	Fine	Surface	1.0	29.00	29.00	29.0	7.68	7.68	7.7	28.59	28.59	28.6	64.2	63.6	63.9	4.23	4.20	4.22
	-		Middle	2.0	-	-	-	-	-	-	-	-	-	-	-	-	-	-	
	11:58		Bottom	3.0	28.50	28.50	28.5	7.69	7.69	7.7	28.67	28.67	28.7	71.3	71.0	71.2	4.72	4.70	4.71
26/8/2016	-	Sunny	Surface	-	-	-	-	-	-	-	-	-	-	-	-	-	-	-	
	15:35		Middle	1.5	29.10	29.10	29.1	7.80	7.80	7.8	27.25	27.25	27.3	84.4	84.9	84.7	5.56	5.59	5.58
	-		Bottom	-	-	-	-	-	-	-	-	-	-	-	-	-	-	-	

Remarks:
Single underline denotes exceedance over Action Level.
Double underline denotes exceedance over Limit Level.



**Water Monitoring Result at Ex-WPCWA SW - South-western corners of ex-Public Cargo Works Area
Mid-Flood Tide**

Date	Time	Weather Condition	Sampling Depth		Water Temperature			pH			Salinity			DO Saturation			DO		
					°C			-			ppt			%			mg/L		
			m	Value	Average	Value	Average	Value	Average	Value	Average	Value	Average	Value	Average	Value	Average		
27/7/2016	-	Fine	Surface	-	-	-	-	-	-	-	-	-	-	-	-	-	-	-	-
	14:54		Middle	1.5	26.70	26.70	26.7	8.18	8.18	8.2	24.53	24.53	24.5	49.9	49.6	49.8	3.48	3.46	3.47
	-		Bottom	-	-	-	-	-	-	-	-	-	-	-	-	-	-	-	-
29/7/2016	-	Fine	Surface	-	-	-	-	-	-	-	-	-	-	-	-	-	-	-	-
	16:30		Middle	1.5	28.50	28.50	28.5	8.37	8.37	8.4	12.35	12.35	12.4	33.4	33.3	33.4	2.42	2.41	<u>2.42</u>
	-		Bottom	-	-	-	-	-	-	-	-	-	-	-	-	-	-	-	-
1/8/2016	-	Strong Wind Warning Signal No. 3	Surface	-	-	-	-	-	-	-	-	-	-	-	-	-	-	-	-
	-		Middle	0.0	-	-	-	-	-	-	-	-	-	-	-	-	-	-	-
	-		Bottom	-	-	-	-	-	-	-	-	-	-	-	-	-	-	-	-
3/8/2016	-	Cloudy	Surface	-	-	-	-	-	-	-	-	-	-	-	-	-	-	-	-
	18:21		Middle	1.0	26.30	26.30	26.3	8.20	8.19	8.2	13.02	13.02	13.0	52.0	52.3	52.2	3.89	3.91	3.90
	-		Bottom	-	-	-	-	-	-	-	-	-	-	-	-	-	-	-	-
5/8/2016	-	Fine	Surface	-	-	-	-	-	-	-	-	-	-	-	-	-	-	-	-
	21:08		Middle	1.5	26.80	26.90	26.9	7.72	7.72	7.7	21.50	21.50	21.5	59.3	59.8	59.6	4.03	4.06	4.05
	-		Bottom	-	-	-	-	-	-	-	-	-	-	-	-	-	-	-	-
8/8/2016	-	Fine	Surface	-	-	-	-	-	-	-	-	-	-	-	-	-	-	-	-
	10:36		Middle	1.5	26.50	26.50	26.5	8.13	8.13	8.1	27.12	27.12	27.1	44.4	43.0	43.7	3.06	2.96	<u>3.01</u>
	-		Bottom	-	-	-	-	-	-	-	-	-	-	-	-	-	-	-	-
11/8/2016	-	Cloudy	Surface	-	-	-	-	-	-	-	-	-	-	-	-	-	-	-	-
	1:59		Middle	1.5	26.20	26.20	26.2	7.71	7.71	7.7	28.27	28.27	28.3	59.2	59.0	59.1	4.08	4.06	4.07
	-		Bottom	-	-	-	-	-	-	-	-	-	-	-	-	-	-	-	-
13/8/2016	-	Cloudy	Surface	-	-	-	-	-	-	-	-	-	-	-	-	-	-	-	-
	2:30		Middle	1.5	26.50	26.50	26.5	7.92	7.92	7.9	21.90	21.90	21.9	53.9	54.9	54.4	3.75	3.82	3.79
	-		Bottom	-	-	-	-	-	-	-	-	-	-	-	-	-	-	-	-
15/8/2016	-	Cloudy	Surface	-	-	-	-	-	-	-	-	-	-	-	-	-	-	-	-
	17:10		Middle	1.5	27.10	27.10	27.1	8.88	8.89	8.9	3.94	3.93	3.9	21.5	21.9	21.7	1.67	1.71	<u>1.69</u>
	-		Bottom	-	-	-	-	-	-	-	-	-	-	-	-	-	-	-	-
17/8/2016	-	Cloudy	Surface	-	-	-	-	-	-	-	-	-	-	-	-	-	-	-	-
	17:30		Middle	1.0	26.40	26.40	26.4	8.13	8.13	8.1	19.17	19.17	19.2	57.1	57.4	57.3	4.13	4.15	4.14
	-		Bottom	-	-	-	-	-	-	-	-	-	-	-	-	-	-	-	-
19/8/2016	-	Cloudy	Surface	-	-	-	-	-	-	-	-	-	-	-	-	-	-	-	-
	18:55		Middle	1.0	27.40	27.40	27.4	8.16	8.16	8.2	14.13	14.13	14.1	54.6	54.9	54.8	3.71	3.74	3.73
	-		Bottom	-	-	-	-	-	-	-	-	-	-	-	-	-	-	-	-
22/8/2016	-	Fine	Surface	-	-	-	-	-	-	-	-	-	-	-	-	-	-	-	-
	11:20		Middle	1.5	27.00	27.00	27.0	8.24	8.24	8.2	19.99	19.99	20.0	32.9	33.1	33.0	2.34	2.36	<u>2.35</u>
	-		Bottom	-	-	-	-	-	-	-	-	-	-	-	-	-	-	-	-
24/8/2016	-	Fine	Surface	-	-	-	-	-	-	-	-	-	-	-	-	-	-	-	-
	11:25		Middle	1.5	27.70	27.70	27.7	7.85	7.85	7.9	19.40	19.40	19.4	42.5	41.2	41.9	3.00	2.90	<u>2.95</u>
	-		Bottom	-	-	-	-	-	-	-	-	-	-	-	-	-	-	-	-
26/8/2016	-	Sunny	Surface	-	-	-	-	-	-	-	-	-	-	-	-	-	-	-	-
	15:19		Middle	1.5	28.20	28.20	28.2	8.03	8.03	8.0	15.98	15.98	16.0	45.0	45.3	45.2	3.21	3.23	3.22
	-		Bottom	-	-	-	-	-	-	-	-	-	-	-	-	-	-	-	-

Remarks:
Single underline denotes exceedance over Action Level.
Double underline denotes exceedance over Limit Level.



**Water Monitoring Result at Ex-WPCWA SE - South-eastern corners of ex-Public Cargo Works Area
Mid-Flood Tide**

Date	Time	Weater Condition	Sampling Depth		Water Temperature			pH			Salinity			DO Saturation			DO		
			m	°C		-		ppt		%		mg/L							
				Value	Average	Value	Average	Value	Average	Value	Average	Value	Average						
27/7/2016	14:50	Fine	Surface	1.0	27.50	27.50	27.5	8.23	8.23	8.2	25.22	25.22	25.2	63.6	62.3	63.0	4.35	4.26	4.31
	-		Middle	2.0	-	-	-	-	-	-	-	-	-	-	-	-	-	-	-
	14:52		Bottom	3.0	26.60	26.60	26.6	8.16	8.16	8.2	29.68	29.68	29.7	74.8	73.4	74.1	5.07	4.97	5.02
29/7/2016	16:35	Fine	Surface	1.0	27.40	27.40	27.4	8.06	8.06	8.1	25.75	25.75	25.8	65.9	65.1	65.5	4.51	4.45	4.48
	-		Middle	2.0	-	-	-	-	-	-	-	-	-	-	-	-	-	-	
	16:37		Bottom	3.0	27.60	27.60	27.6	7.87	7.87	7.9	25.98	25.98	26.0	73.1	73.5	73.3	4.95	5.00	4.98
1/8/2016	-	Strong Wind Warning Signal No. 3	Surface	-	-	-	-	-	-	-	-	-	-	-	-	-	-	-	
	-		Middle	0.0	-	-	-	-	-	-	-	-	-	-	-	-	-	-	
	-		Bottom	-	-	-	-	-	-	-	-	-	-	-	-	-	-	-	
3/8/2016	18:25	Cloudy	Surface	1.0	26.40	26.40	26.4	8.11	8.11	8.1	13.02	13.02	13.0	55.7	55.8	55.8	4.17	4.18	4.18
	-		Middle	2.0	-	-	-	-	-	-	-	-	-	-	-	-	-	-	
	18:26		Bottom	3.0	26.40	26.40	26.4	8.13	8.13	8.1	13.02	13.02	13.0	56.0	56.9	56.5	4.19	4.26	4.23
5/8/2016	21:12	Fine	Surface	1.0	27.00	27.00	27.0	7.69	7.69	7.7	21.49	21.49	21.5	61.6	61.0	61.3	4.19	4.14	4.17
	-		Middle	2.5	-	-	-	-	-	-	-	-	-	-	-	-	-	-	
	21:13		Bottom	4.0	27.00	27.00	27.0	7.70	7.69	7.7	21.49	21.49	21.5	62.9	62.5	62.7	4.27	4.24	4.26
8/8/2016	10:40	Fine	Surface	1.0	26.90	26.90	26.9	8.03	8.03	8.0	26.92	26.92	26.9	51.1	51.1	51.1	3.50	3.50	<u>3.50</u>
	-		Middle	2.0	-	-	-	-	-	-	-	-	-	-	-	-	-	-	
	10:42		Bottom	3.0	26.60	26.60	26.6	7.96	7.96	8.0	29.24	29.24	29.2	64.8	64.3	64.6	4.41	4.37	4.39
11/8/2016	1:55	Cloudy	Surface	1.0	26.20	26.20	26.2	7.71	7.71	7.7	28.30	28.30	28.3	60.5	61.6	61.1	4.17	4.24	4.21
	-		Middle	2.5	-	-	-	-	-	-	-	-	-	-	-	-	-	-	
	1:56		Bottom	4.0	26.30	26.30	26.3	7.70	7.70	7.7	28.30	28.30	28.3	62.2	62.0	62.1	4.28	4.26	4.27
13/8/2016	2:25	Cloudy	Surface	1.0	26.50	26.50	26.5	7.82	7.82	7.8	21.44	21.44	21.4	58.4	58.9	58.7	4.06	4.09	4.08
	-		Middle	2.5	-	-	-	-	-	-	-	-	-	-	-	-	-	-	
	2:26		Bottom	4.0	26.60	26.50	26.6	7.75	7.75	7.8	21.90	21.90	21.9	59.1	59.2	59.2	4.11	4.11	4.11
15/8/2016	17:01	Cloudy	Surface	1.0	26.10	26.10	26.1	8.31	8.31	8.3	21.85	21.85	21.9	55.7	55.6	55.7	3.99	3.98	3.99
	-		Middle	2.0	-	-	-	-	-	-	-	-	-	-	-	-	-	-	
	17:03		Bottom	3.0	26.00	26.00	26.0	8.17	8.17	8.2	23.82	23.82	23.8	64.8	64.7	64.8	4.60	4.59	4.60
17/8/2016	17:35	Cloudy	Surface	1.0	26.40	26.40	26.4	8.00	8.00	8.0	19.16	19.16	19.2	58.2	58.6	58.4	4.21	4.24	4.23
	0:00		Middle	2.0	-	-	-	-	-	-	-	-	-	-	-	-	-	-	
	17:36		Bottom	3.0	26.40	26.40	26.4	8.00	8.00	8.0	19.16	19.16	19.2	58.8	58.5	58.7	4.25	4.22	4.24
19/8/2016	18:58	Cloudy	Surface	1.0	27.40	27.40	27.4	8.00	8.01	8.0	14.16	14.16	14.2	57.6	58.2	57.9	3.92	3.95	3.94
	-		Middle	2.0	-	-	-	-	-	-	-	-	-	-	-	-	-	-	
	18:59		Bottom	3.0	27.40	27.40	27.4	7.98	7.98	8.0	14.16	14.16	14.2	58.6	58.9	58.8	3.98	4.00	3.99
22/8/2016	11:25	Fine	Surface	1.0	27.20	27.20	27.2	8.01	8.01	8.0	23.87	23.87	23.9	51.3	51.6	51.5	3.56	3.59	3.58
	-		Middle	2.0	-	-	-	-	-	-	-	-	-	-	-	-	-	-	
	11:27		Bottom	3.0	27.20	27.20	27.2	8.00	8.00	8.0	28.62	28.62	28.6	70.7	70.2	70.5	4.78	4.75	4.77
24/8/2016	11:20	Fine	Surface	1.0	27.90	27.90	27.9	7.63	7.63	7.6	25.72	25.72	25.7	67.0	67.3	67.1	4.53	4.57	4.55
	-		Middle	2.5	-	-	-	-	-	-	-	-	-	-	-	-	-	-	
	11:22		Bottom	4.0	27.90	27.90	27.9	7.64	7.64	7.6	28.17	28.17	28.2	82.2	82.9	82.6	5.51	5.56	5.54
26/8/2016	15:15	Sunny	Surface	1.0	28.70	28.70	28.7	7.96	7.96	8.0	25.55	25.55	25.6	72.2	71.6	71.9	4.83	4.79	4.81
	-		Middle	2.0	-	-	-	-	-	-	-	-	-	-	-	-	-	-	
	15:17		Bottom	3.0	28.60	28.60	28.6	7.89	7.89	7.9	27.43	27.43	27.4	78.2	78.1	78.2	5.20	5.19	5.20

Remarks:
 Single underline denotes exceedance over Action Level.
 Double underline denotes exceedance over Limit Level.



**Water Monitoring Result at C6 - Excelsior Hotel
Mid-Ebb Tide**

Date	Time	Weather Condition	Sampling Depth		Water Temperature			pH			Salinity			DO Saturation			DO		
					°C			-			ppt			%			mg/L		
			m	Value	Average	Value	Average	Value	Average	Value	Average	Value	Average	Value	Average	Value	Average		
27/7/2016	-	Fine	Surface	-	-	-	-	-	-	-	-	-	-	-	-	-	-	-	
	16:16		Middle	2	27.90	27.90	27.9	8.12	8.12	8.1	29.56	29.56	29.6	81.5	82.0	81.8	5.41	5.60	5.51
	-		Bottom	-	-	-	-	-	-	-	-	-	-	-	-	-	-	-	-
29/7/2016	-	Fine	Surface	-	-	-	-	-	-	-	-	-	-	-	-	-	-	-	
	11:31		Middle	2	27.60	27.60	27.6	8.19	8.19	8.2	25.93	25.93	25.9	45.8	44.4	45.1	3.12	3.03	3.08
	-		Bottom	-	-	-	-	-	-	-	-	-	-	-	-	-	-	-	-
1/8/2016	11:35	Cloudy	Surface	1	26.20	26.20	26.2	8.12	8.12	8.1	29.74	29.74	29.7	69.1	69.5	69.3	4.71	4.73	4.72
	-		Middle	2	-	-	-	-	-	-	-	-	-	-	-	-	-	-	-
	11:37		Bottom	3	26.50	26.50	26.5	8.10	8.10	8.1	30.28	30.28	30.3	77.8	78.8	78.3	5.31	5.38	5.35
3/8/2016	-	Cloudy	Surface	-	-	-	-	-	-	-	-	-	-	-	-	-	-	-	
	15:37		Middle	2	25.50	25.50	25.5	8.14	8.14	8.1	27.15	27.15	27.2	65.1	64.9	65.0	4.57	4.56	4.57
	-		Bottom	-	-	-	-	-	-	-	-	-	-	-	-	-	-	-	-
5/8/2016	-	Fine	Surface	-	-	-	-	-	-	-	-	-	-	-	-	-	-	-	
	15:15		Middle	2	26.50	26.50	26.5	7.91	7.91	7.9	30.44	30.44	30.4	56.4	57.6	57.0	3.83	3.90	3.87
	-		Bottom	-	-	-	-	-	-	-	-	-	-	-	-	-	-	-	-
8/8/2016	15:50	Fine	Surface	1	28.30	28.30	28.3	7.96	7.96	8.0	25.30	25.30	25.3	49.3	47.7	48.5	3.33	3.22	3.28
	-		Middle	2	-	-	-	-	-	-	-	-	-	-	-	-	-	-	-
	15:52		Bottom	3	28.10	28.10	28.1	7.89	7.89	7.9	28.58	28.58	28.6	54.2	53.3	53.8	3.63	3.57	3.60
11/8/2016	-	Cloudy	Surface	-	-	-	-	-	-	-	-	-	-	-	-	-	-	-	
	5:45		Middle	2	26.80	26.80	26.8	7.67	7.69	7.7	23.49	23.49	23.5	50.5	51.5	51.0	3.55	3.62	3.59
	-		Bottom	-	-	-	-	-	-	-	-	-	-	-	-	-	-	-	-
13/8/2016	-	Fine	Surface	-	-	-	-	-	-	-	-	-	-	-	-	-	-	-	
	9:20		Middle	2	26.50	26.50	26.5	7.98	7.98	8.0	28.29	28.29	28.3	49.1	49.4	49.3	3.37	3.38	3.38
	-		Bottom	-	-	-	-	-	-	-	-	-	-	-	-	-	-	-	-
15/8/2016	-	Fine	Surface	-	-	-	-	-	-	-	-	-	-	-	-	-	-	-	
	11:35		Middle	1	26.20	26.20	26.2	7.98	7.98	8.0	27.33	27.33	27.3	64.8	63.1	64.0	4.48	4.42	4.45
	-		Bottom	-	-	-	-	-	-	-	-	-	-	-	-	-	-	-	-
17/8/2016	-	Fine	Surface	-	-	-	-	-	-	-	-	-	-	-	-	-	-	-	
	12:06		Middle	2	26.80	26.80	26.8	8.22	8.22	8.2	21.80	21.80	21.8	66.6	66.1	66.4	4.71	4.72	4.72
	-		Bottom	-	-	-	-	-	-	-	-	-	-	-	-	-	-	-	-
19/8/2016	-	Cloudy	Surface	-	-	-	-	-	-	-	-	-	-	-	-	-	-	-	
	13:20		Middle	2	27.70	27.70	27.7	8.16	8.16	8.2	24.72	24.72	24.7	64.8	63.5	64.2	4.48	4.34	4.41
	-		Bottom	-	-	-	-	-	-	-	-	-	-	-	-	-	-	-	-
22/8/2016	-	Fine	Surface	-	-	-	-	-	-	-	-	-	-	-	-	-	-	-	
	16:20		Middle	2	28.10	28.10	28.1	8.14	8.14	8.1	22.79	22.79	22.8	47.4	47.4	47.4	3.26	3.26	3.26
	-		Bottom	-	-	-	-	-	-	-	-	-	-	-	-	-	-	-	-
24/8/2016	-	Fine	Surface	-	-	-	-	-	-	-	-	-	-	-	-	-	-	-	
	17:10		Middle	2	28.40	28.40	28.4	7.76	7.76	7.8	27.71	27.71	27.7	78.9	79.4	79.2	5.26	5.29	5.28
	-		Bottom	-	-	-	-	-	-	-	-	-	-	-	-	-	-	-	-
26/8/2016	-	Fine	Surface	-	-	-	-	-	-	-	-	-	-	-	-	-	-	-	
	9:13		Middle	1	28.10	28.10	28.1	7.72	7.72	7.7	26.54	26.54	26.5	77.4	78.0	77.7	5.21	5.27	5.24
	-		Bottom	-	-	-	-	-	-	-	-	-	-	-	-	-	-	-	-

Remarks:
Single underline denotes exceedance over Action Level.
Double underline denotes exceedance over Limit Level.



**Water Monitoring Result at Ex-WPCWA SW - South-western corners of ex-Public Cargo Works Area
Mid-Ebb Tide**

Date	Time	Weather Condition	Sampling Depth		Water Temperature			pH			Salinity			DO Saturation			DO		
					°C			-			ppt			%			mg/L		
			m	Value	Average	Value	Average	Value	Average	Value	Average	Value	Average	Value	Average	Value	Average		
27/7/2016	-	Fine	Surface	-	-	-	-	-	-	-	-	-	-	-	-	-	-	-	-
	18:19		Middle	1.5	26.40	26.40	26.4	8.32	8.32	8.3	19.83	19.83	19.8	51.0	51.0	51.0	3.66	3.67	3.67
	-		Bottom	-	-	-	-	-	-	-	-	-	-	-	-	-	-	-	-
29/7/2016	-	Fine	Surface	-	-	-	-	-	-	-	-	-	-	-	-	-	-	-	-
	11:10		Middle	1.5	27.70	27.70	27.7	8.27	8.27	8.3	20.88	20.88	20.9	58.3	57.8	58.1	4.08	4.04	4.06
	-		Bottom	-	-	-	-	-	-	-	-	-	-	-	-	-	-	-	-
1/8/2016	-	Cloudy	Surface	-	-	-	-	-	-	-	-	-	-	-	-	-	-	-	-
	11:20		Middle	1.5	26.60	26.60	26.6	2.38	8.38	5.4	19.24	19.24	19.2	40.0	40.6	40.3	2.88	2.91	<u>2.90</u>
	-		Bottom	-	-	-	-	-	-	-	-	-	-	-	-	-	-	-	-
3/8/2016	-	Cloudy	Surface	-	-	-	-	-	-	-	-	-	-	-	-	-	-	-	-
	11:47		Middle	1.5	25.10	25.10	25.1	8.13	8.13	8.1	27.14	27.14	27.1	47.5	46.7	47.1	3.36	3.30	3.33
	-		Bottom	-	-	-	-	-	-	-	-	-	-	-	-	-	-	-	-
5/8/2016	-	Fine	Surface	-	-	-	-	-	-	-	-	-	-	-	-	-	-	-	-
	14:54		Middle	1.0	27.30	27.30	27.3	8.24	8.24	8.2	10.80	10.79	10.8	22.0	22.0	22.0	1.64	1.64	<u>1.64</u>
	-		Bottom	-	-	-	-	-	-	-	-	-	-	-	-	-	-	-	-
8/8/2016	-	Fine	Surface	-	-	-	-	-	-	-	-	-	-	-	-	-	-	-	-
	15:41		Middle	1.5	27.30	27.30	27.3	8.04	8.04	8.0	22.58	22.58	22.6	46.2	47.6	46.9	3.22	3.32	3.27
	-		Bottom	-	-	-	-	-	-	-	-	-	-	-	-	-	-	-	-
11/8/2016	-	Cloudy	Surface	-	-	-	-	-	-	-	-	-	-	-	-	-	-	-	-
	5:20		Middle	1.5	26.70	26.70	26.7	7.79	7.79	7.8	25.26	25.26	25.3	54.9	54.6	54.8	3.83	3.81	3.82
	-		Bottom	-	-	-	-	-	-	-	-	-	-	-	-	-	-	-	-
13/8/2016	-	Fine	Surface	-	-	-	-	-	-	-	-	-	-	-	-	-	-	-	-
	9:04		Middle	1.5	26.50	26.50	26.5	8.16	8.16	8.2	15.80	15.80	15.8	37.4	38.0	37.7	2.75	2.79	<u>2.77</u>
	-		Bottom	-	-	-	-	-	-	-	-	-	-	-	-	-	-	-	-
15/8/2016	-	Fine	Surface	-	-	-	-	-	-	-	-	-	-	-	-	-	-	-	-
	11:18		Middle	1.5	26.40	26.40	26.4	8.46	8.46	8.5	14.03	14.03	14.0	39.1	35.3	37.2	2.91	2.63	<u>2.77</u>
	-		Bottom	-	-	-	-	-	-	-	-	-	-	-	-	-	-	-	-
17/8/2016	-	Fine	Surface	-	-	-	-	-	-	-	-	-	-	-	-	-	-	-	-
	11:30		Middle	1.5	26.40	26.40	26.4	8.90	8.90	8.9	2.18	2.18	2.2	72.6	72.4	72.5	5.78	5.76	5.77
	-		Bottom	-	-	-	-	-	-	-	-	-	-	-	-	-	-	-	-
19/8/2016	-	Cloudy	Surface	-	-	-	-	-	-	-	-	-	-	-	-	-	-	-	-
	11:30		Middle	1.5	26.80	26.80	26.8	8.28	8.28	8.3	24.32	24.32	24.3	49.5	48.7	49.1	3.44	3.39	3.42
	-		Bottom	-	-	-	-	-	-	-	-	-	-	-	-	-	-	-	-
22/8/2016	-	Fine	Surface	-	-	-	-	-	-	-	-	-	-	-	-	-	-	-	-
	15:50		Middle	1.5	27.50	27.50	27.5	8.35	8.35	8.4	12.64	12.64	12.6	17.5	17.1	17.3	1.28	1.26	<u>1.27</u>
	-		Bottom	-	-	-	-	-	-	-	-	-	-	-	-	-	-	-	-
24/8/2016	-	Fine	Surface	-	-	-	-	-	-	-	-	-	-	-	-	-	-	-	-
	16:35		Middle	1.5	28.00	28.00	28.0	7.87	7.87	7.9	23.81	23.81	23.8	56.7	56.4	56.6	3.87	3.85	3.86
	-		Bottom	-	-	-	-	-	-	-	-	-	-	-	-	-	-	-	-
26/8/2016	-	Fine	Surface	-	-	-	-	-	-	-	-	-	-	-	-	-	-	-	-
	8:55		Middle	1.5	27.30	27.30	27.3	8.45	8.45	8.5	4.14	4.14	4.1	40.0	40.1	40.1	3.08	3.09	<u>3.09</u>
	-		Bottom	-	-	-	-	-	-	-	-	-	-	-	-	-	-	-	-

Remarks:
Single underline denotes exceedance over Action Level.
Double underline denotes exceedance over Limit Level.

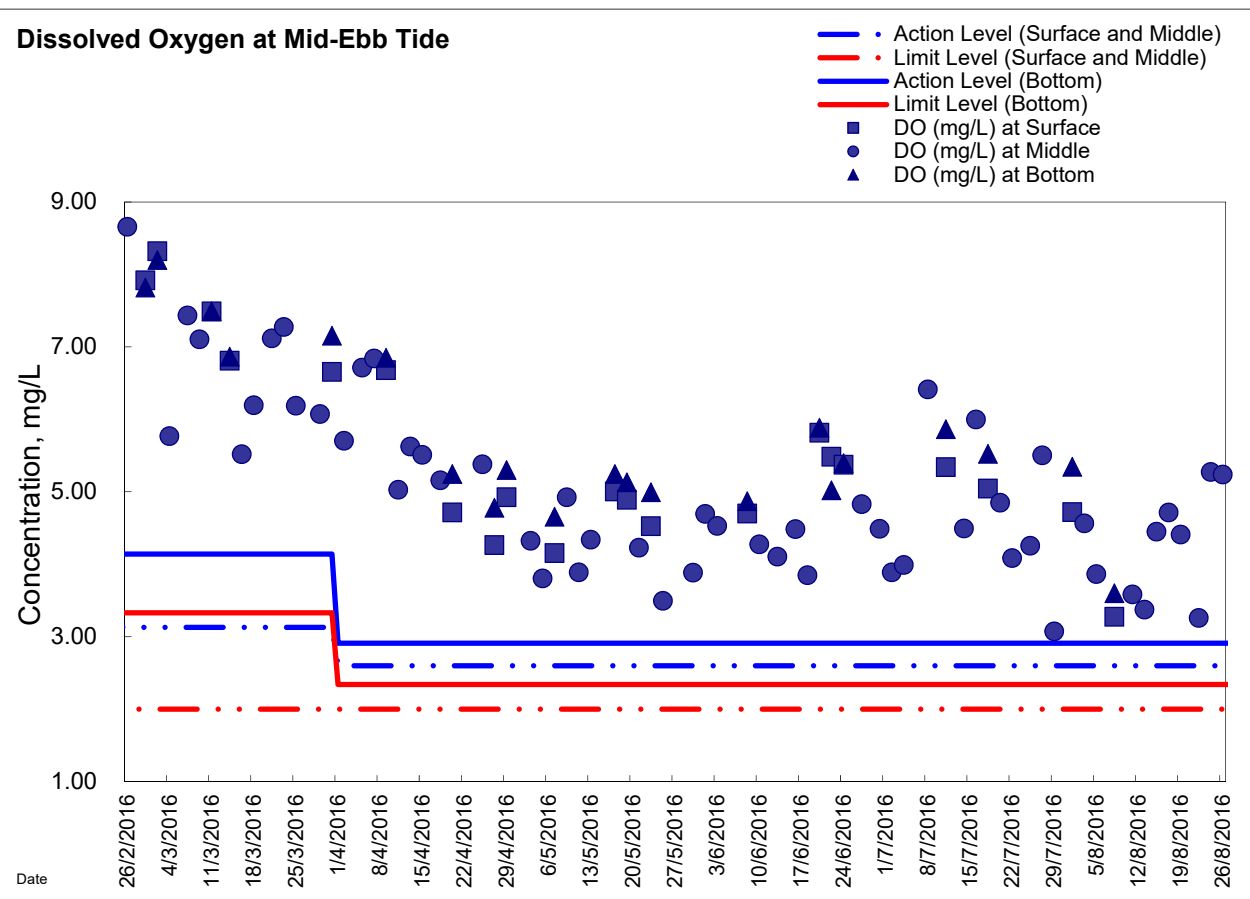
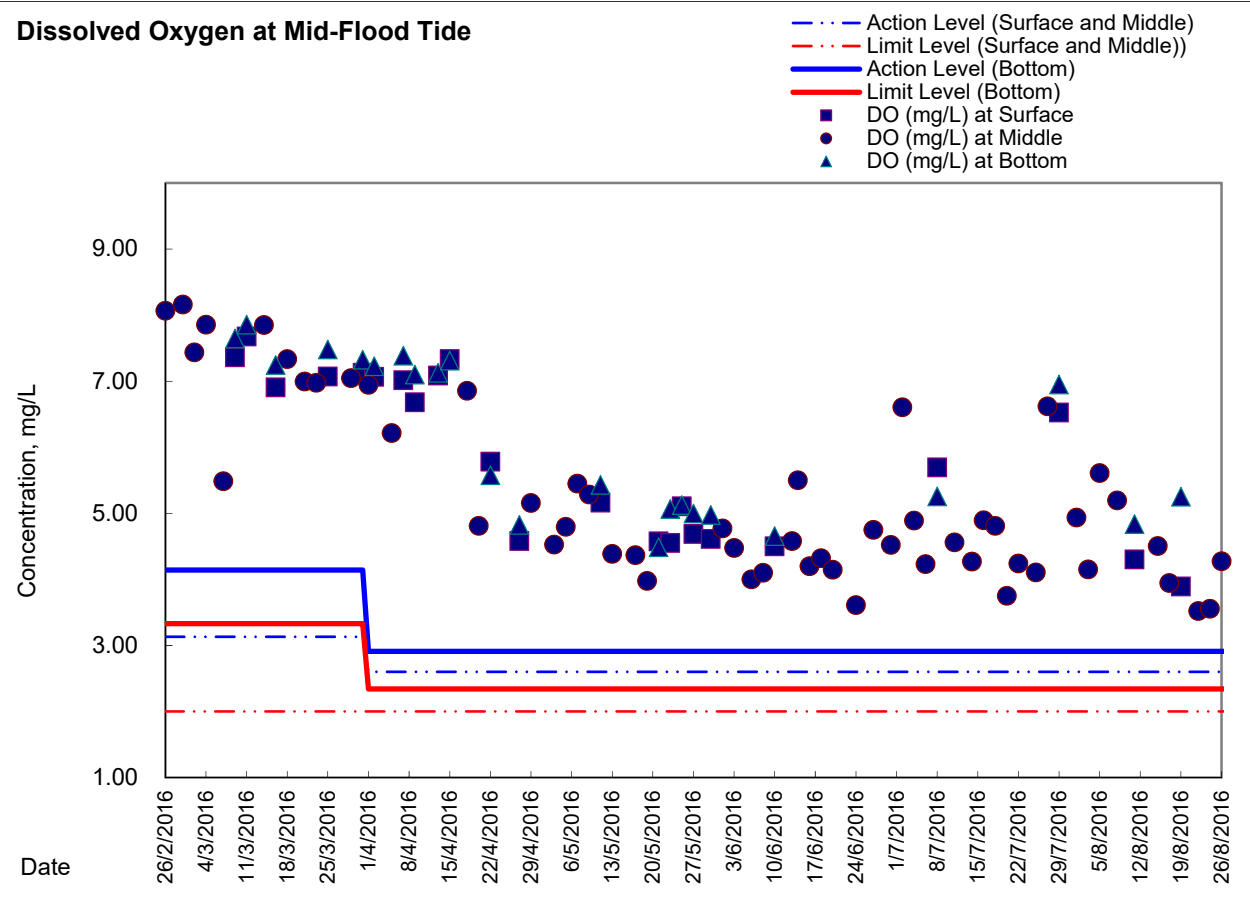


Water Monitoring Result at Ex-WPCWA SE - South-eastern corners of ex-Public Cargo Works Area
Mid-Ebb Tide

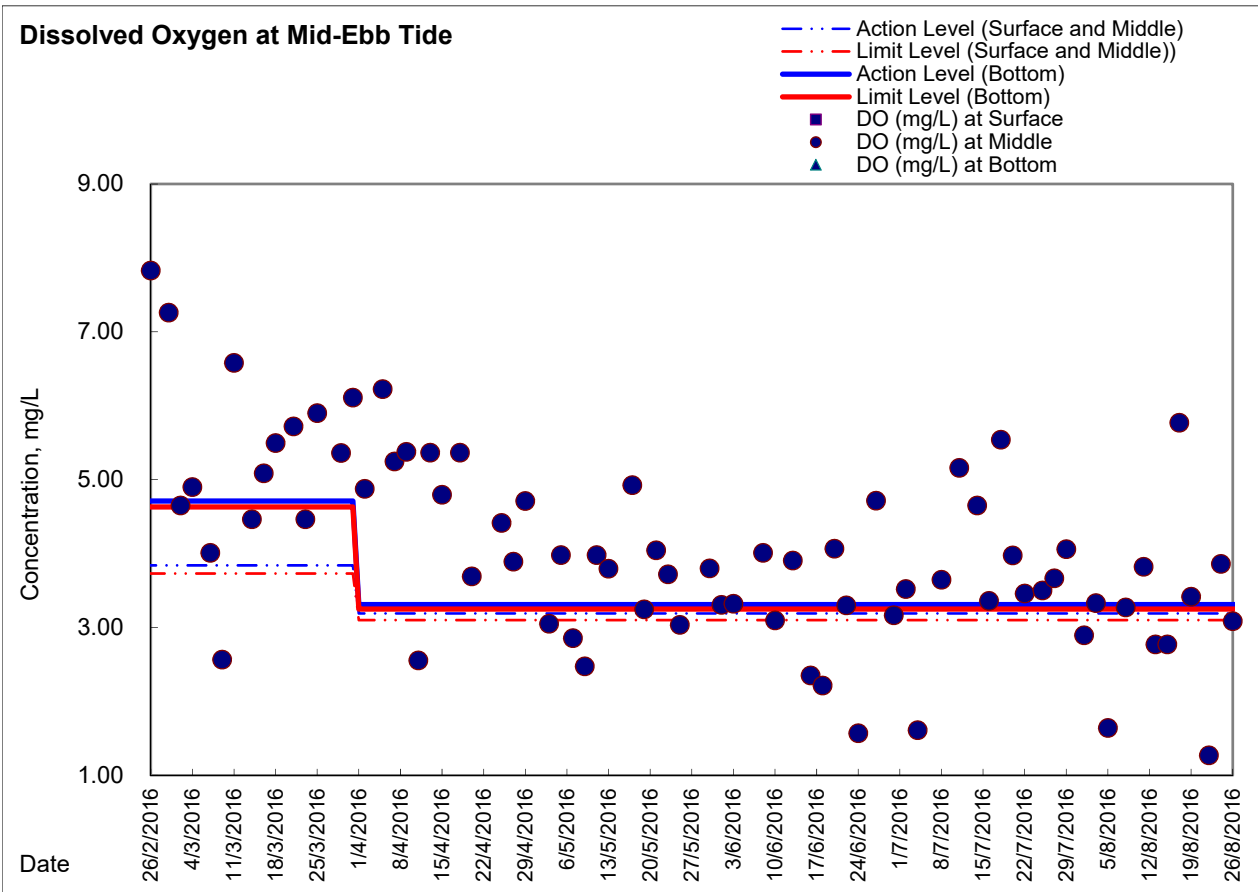
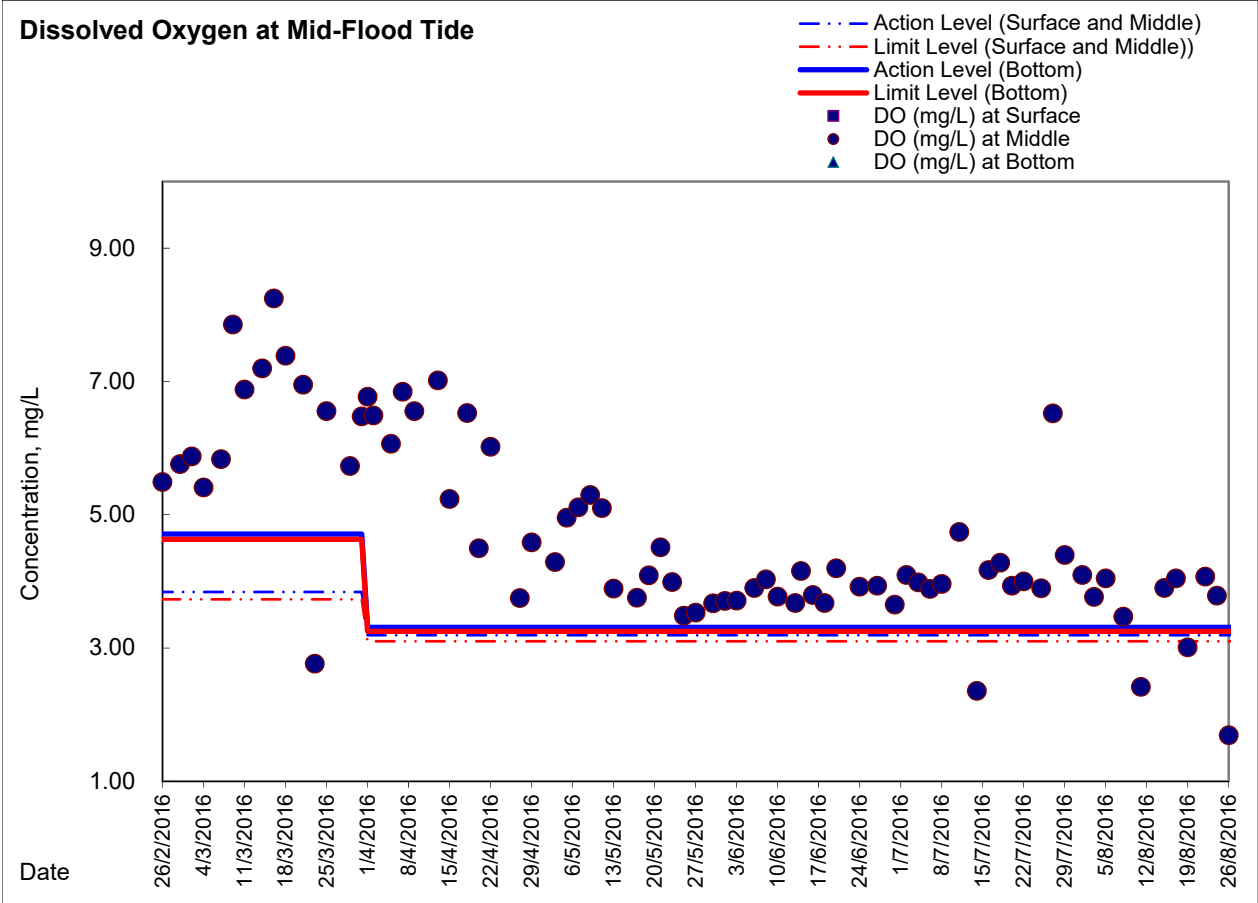
Date	Time	Weather Condition	Sampling Depth		Water Temperature °C			pH			Salinity ppt			DO Saturation %			DO mg/L		
			m	Value		Average	Value		Average	Value		Average	Value		Average	Value		Average	
27/7/2016	18:15	Fine	Surface	1.0	26.50	26.50	26.5	8.31	8.31	8.3	27.30	27.30	27.3	72.9	73.0	73.0	5.03	5.03	5.03
	-		Middle	2.0	-	-	-	-	-	-	-	-	-	-	-	-	-	-	-
	18:17		Bottom	3.0	26.20	26.20	26.2	8.74	8.74	8.7	28.99	28.99	29.0	77.6	76.7	77.2	5.32	5.26	5.29
29/7/2016	11:15	Fine	Surface	1.0	27.50	27.50	27.5	8.09	8.09	8.1	23.82	23.82	23.8	69.6	68.6	69.1	4.81	4.73	4.77
	-		Middle	2.0	-	-	-	-	-	-	-	-	-	-	-	-	-	-	-
	11:17		Bottom	3.0	27.40	27.40	27.4	8.10	8.10	8.1	27.16	27.16	27.2	84.4	86.0	85.2	5.43	5.54	5.49
1/8/2016	11:25	Cloudy	Surface	1.0	26.20	26.20	26.2	7.89	7.89	7.9	26.54	26.54	26.5	63.1	63.4	63.3	4.38	4.41	4.40
	-		Middle	2.0	-	-	-	-	-	-	-	-	-	-	-	-	-	-	-
	11:27		Bottom	3.0	26.20	26.20	26.2	8.09	8.09	8.1	27.63	27.63	27.6	77.4	76.4	76.9	5.35	5.28	5.32
3/8/2016	11:43	Cloudy	Surface	1.0	25.40	25.40	25.4	8.20	8.20	8.2	24.75	24.75	24.8	55.2	56.3	55.8	3.93	4.00	3.97
	-		Middle	2.0	-	-	-	-	-	-	-	-	-	-	-	-	-	-	-
	11:45		Bottom	3.0	24.90	24.90	24.9	8.07	8.07	8.1	30.31	30.31	30.3	67.2	66.8	67.0	4.68	4.65	4.67
5/8/2016	14:50	Fine	Surface	1.0	26.50	26.50	26.5	7.62	7.62	7.6	24.32	24.32	24.3	37.3	37.2	37.3	2.61	2.61	<u>2.61</u>
	-		Middle	2.0	-	-	-	-	-	-	-	-	-	-	-	-	-	-	-
	14:52		Bottom	3.0	26.50	26.50	26.5	7.75	7.75	7.8	27.26	27.26	27.3	55.2	54.9	55.1	3.81	3.73	3.77
8/8/2016	15:37	Fine	Surface	1.0	27.70	27.70	27.7	8.12	8.12	8.1	25.81	25.81	25.8	56.1	56.2	56.2	3.82	3.82	3.82
	-		Middle	2.0	-	-	-	-	-	-	-	-	-	-	-	-	-	-	-
	15:39		Bottom	3.0	27.60	27.60	27.6	8.04	8.04	8.0	26.29	26.29	26.3	64.3	64.2	64.3	4.37	4.37	4.37
11/8/2016	5:15	Cloudy	Surface	1.0	26.60	26.60	26.6	7.77	7.77	7.8	25.23	25.23	25.2	61.9	62.4	62.2	4.32	4.35	4.34
	-		Middle	2.5	-	-	-	-	-	-	-	-	-	-	-	-	-	-	-
	5:16		Bottom	4.0	26.60	26.60	26.6	7.80	7.80	7.8	25.25	25.25	25.3	63.4	64.1	63.8	4.42	4.47	4.45
13/8/2016	9:00	Fine	Surface	1.0	26.60	26.60	26.6	8.22	8.22	8.2	22.13	22.13	22.1	51.9	51.1	51.5	3.67	3.62	3.65
	-		Middle	2.0	-	-	-	-	-	-	-	-	-	-	-	-	-	-	-
	9:02		Bottom	3.0	26.20	26.20	26.2	8.03	8.03	8.0	25.95	25.95	26.0	59.8	58.8	59.3	4.11	4.00	4.06
15/8/2016	11:14	Fine	Surface	1.0	26.90	26.90	26.9	8.30	8.30	8.3	27.45	27.45	27.5	67.1	66.9	67.0	4.65	4.53	4.59
	-		Middle	2.0	-	-	-	-	-	-	-	-	-	-	-	-	-	-	-
	11:16		Bottom	3.0	25.80	25.80	25.8	8.22	8.22	8.2	29.69	29.69	29.7	71.9	72.2	72.1	4.95	4.98	4.97
17/8/2016	11:35	Fine	Surface	1.0	26.10	26.10	26.1	8.30	8.30	8.3	21.24	21.24	21.2	70.8	71.1	71.0	5.08	5.10	5.09
	-		Middle	2.0	-	-	-	-	-	-	-	-	-	-	-	-	-	-	-
	11:37		Bottom	3.0	26.10	26.10	26.1	8.02	8.02	8.0	26.59	26.59	26.6	79.1	78.6	78.9	5.51	5.48	5.50
19/8/2016	11:35	Cloudy	Surface	1.0	27.30	27.30	27.3	8.17	8.17	8.2	24.77	24.77	24.8	61.0	61.7	61.4	4.21	4.26	4.24
	-		Middle	2.5	-	-	-	-	-	-	-	-	-	-	-	-	-	-	-
	11:37		Bottom	4.0	27.30	27.30	27.3	8.10	8.10	8.1	28.19	28.19	28.2	76.4	76.5	76.5	5.17	5.18	5.18
22/8/2016	15:55	Fine	Surface	1.0	27.60	27.60	27.6	7.79	7.79	7.8	21.20	21.20	21.2	53.5	54.2	53.9	3.75	3.79	3.77
	-		Middle	2.0	-	-	-	-	-	-	-	-	-	-	-	-	-	-	-
	15:57		Bottom	3.0	27.80	27.80	27.8	7.79	7.79	7.8	25.21	25.21	25.2	67.8	67.0	67.4	4.61	4.57	4.59
24/8/2016	16:30	Fine	Surface	1.0	28.10	28.10	28.1	7.79	7.79	7.8	23.98	23.98	24.0	58.7	58.2	58.5	4.01	3.98	4.00
	-		Middle	2.0	-	-	-	-	-	-	-	-	-	-	-	-	-	-	-
	16:32		Bottom	3.0	27.90	27.90	27.9	7.74	7.74	7.7	26.24	26.24	26.2	73.9	73.7	73.8	5.00	4.99	5.00
26/8/2016	8:57	Fine	Surface	1.0	27.80	27.80	27.8	7.55	7.55	7.6	29.59	29.59	29.6	76.4	76.3	76.4	5.23	5.23	5.23
	-		Middle	2.0	-	-	-	-	-	-	-	-	-	-	-	-	-	-	-
	8:59		Bottom	3.0	27.80	27.80	27.8	7.61	7.61	7.6	27.21	27.21	27.2	79.7	79.0	79.4	5.38	5.33	5.36

Remarks:
Single underline denotes exceedance over Action Level.
Double underline denotes exceedance over Limit Level.

Graphic Presentation of Enhanced Water Monitoring Results (DO) at C6 - Excelsior Hotel



**Graphic Presentation of Enhanced Water Monitoring Results (DO) at Ex-WPCWA SW
- South-western corners of ex-Public Cargo Works Area**





Graphic Presentation of Enhanced Water Monitoring Results (DO) at Ex-WPCWA SE - South-eastern corners of ex-Public Cargo Works Area

